

Windows Setup Guide for ST-A10

First Edition: September 27, 2007

TOSHIBA TEC CORPORATION

Table of Contents

| | |
|---|-----------|
| 1. Introduction | 1 |
| 2. Setup of Windows XP (ST-A10) | 2 |
| 2.1 Installation of Windows | 2 |
| 2.2 Installation of Service Pack | 2 |
| 2.3 Installation of VIA Chipset Program | 2 |
| 2.4 Installation of VIA Graphic Driver | 5 |
| 2.5 Installation of VIA Network Driver | 6 |
| 2.6 Installation of VIA Audio Driver | 7 |
| 2.7 Installation of Elo Touch Panel Driver | 10 |
| 2.8 Installation of the iButton Driver | 17 |
| 3. Setup of Windows2000 (ST-A10) | 26 |
| 3.1 Installation of Service Pack | 26 |
| 3.2 Installation of Windows | 26 |
| 3.3 Installation of VIA Chipset Program | 28 |
| 3.4 Installation of VIA Graphic Driver | 31 |
| 3.5 Installation of VIA Network Driver | 32 |
| 3.6 Installation of VIA Audio Driver | 33 |
| 3.7 Installation of Elo Touch Panel Driver | 36 |
| 3.8 Installation of the iButton Driver | 43 |

Copyright © 2007 Toshiba TEC Corporation All rights reserved. It is prohibited to use or duplicate a part or whole of this document without the permission of Toshiba TEC Corporation.

This document is subject to change without prior notice.

Trademark Notification

* Microsoft, Windows, Windows 2000, and Windows XP are registered trademarks of Microsoft Corporation in the United States and/or other countries.

The official name of Windows is the "Microsoft Windows Operating System".

* iButton and 1-Wire are registered trademarks of Dallas Semiconductor Corp. Dallas Semiconductor is a wholly owned subsidiary of Maxim Integrated Products, Inc.

* All other product names mentioned in this document are trademarks or registered trademarks of their respective owners.

1. Introduction

This document describes the procedures and cautions for installing the drivers on the ST-A10. The outline of procedures to install Windows operating system on the ST-A10 is as follows:

Windows Setup Procedure

- 1) Installation of Windows
- 2) Installation of Service Pack
- 3) Installation of Chipset Program and Driver
- 4) Installation of Elo Touch Panel Driver and Calibration of Touch Panel
- 5) Installation of jButton Driver

2. Setup of Windows XP (ST-A10)

2.1 Installation of Windows

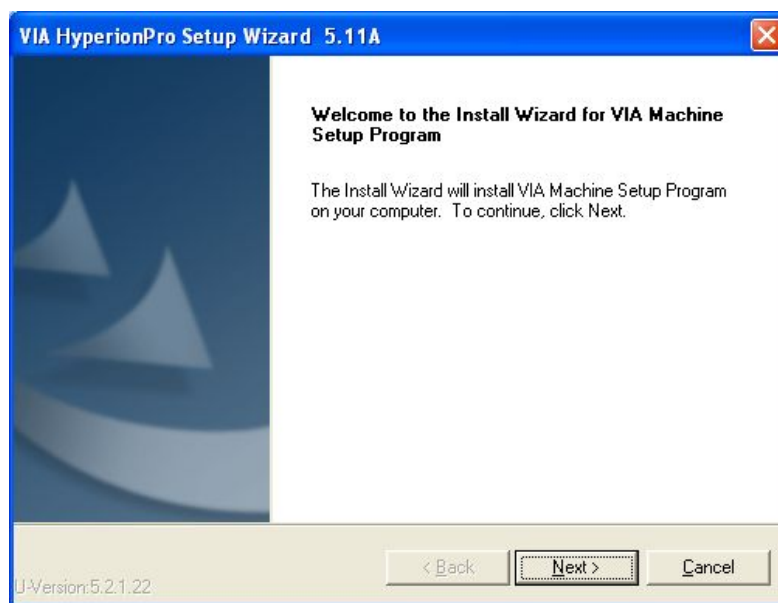
Install Windows XP.

2.2 Installation of Service Pack

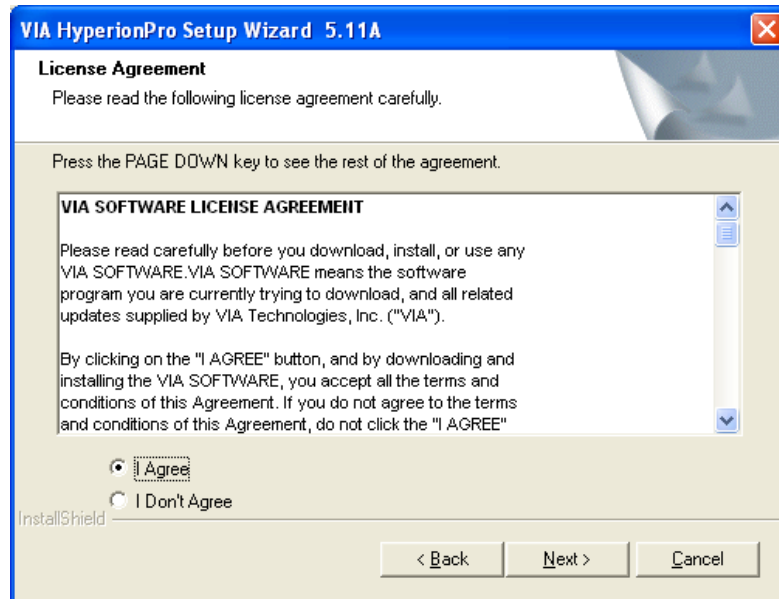
Install a Windows XP service pack, if necessary.

2.3 Installation of VIA Chipset Program

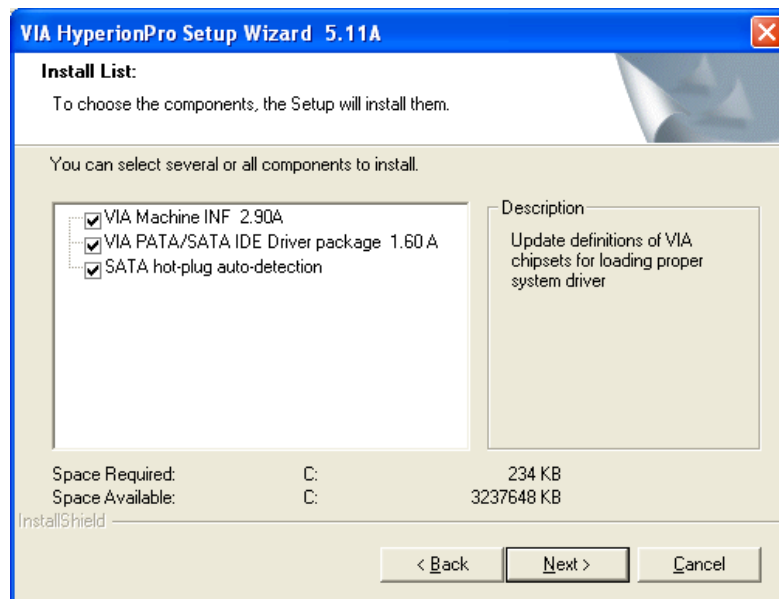
Run "SETUP.EXE" in the "ST-A10\VIA\Chipset[CN700]\VIA_HyperionPro_V511A" folder in the Driver Kit CD-ROM, and the following screen appears. Click on the "Next" button.



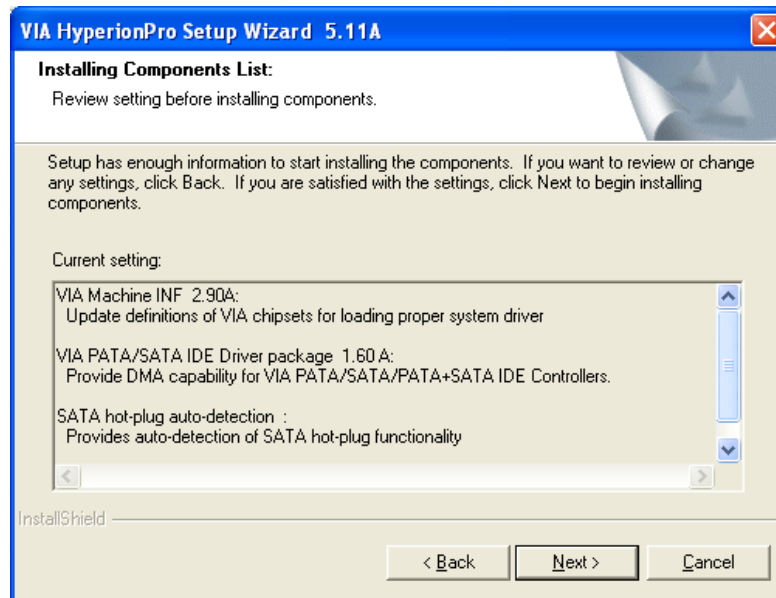
The “License Agreement” screen appears. Click on the “I Agree” radio button, then click on the “Next” button.



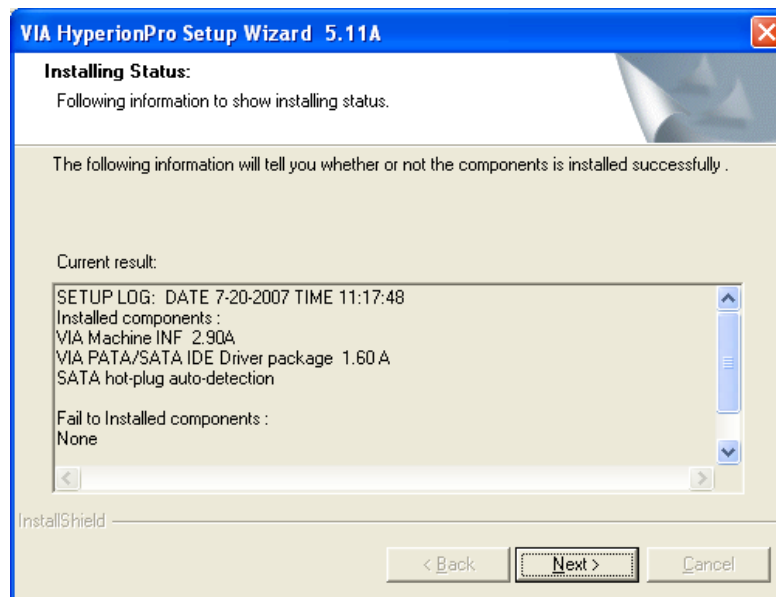
Click on the “VIA Machine INF 2.90A”, “VIA PATA/SATA IDE Driver package 1.60A”, and “SATA hot-plug auto-detection” check boxes, then click on the “Next” button.



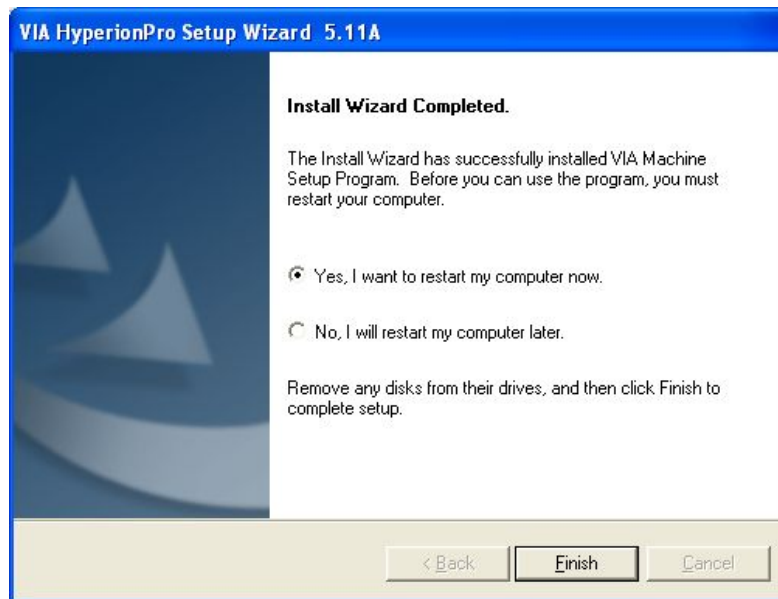
Make sure that “VIA Machine INF 2.90A”, “VIA PATA/SATA IDE Driver package 1.60A”, and “SATA hot-plug auto-detection” are displayed in the “Current setting” box on the screen, then click on the “Next” button.



When the “Installing Status” screen appears, click on the “Next” button.



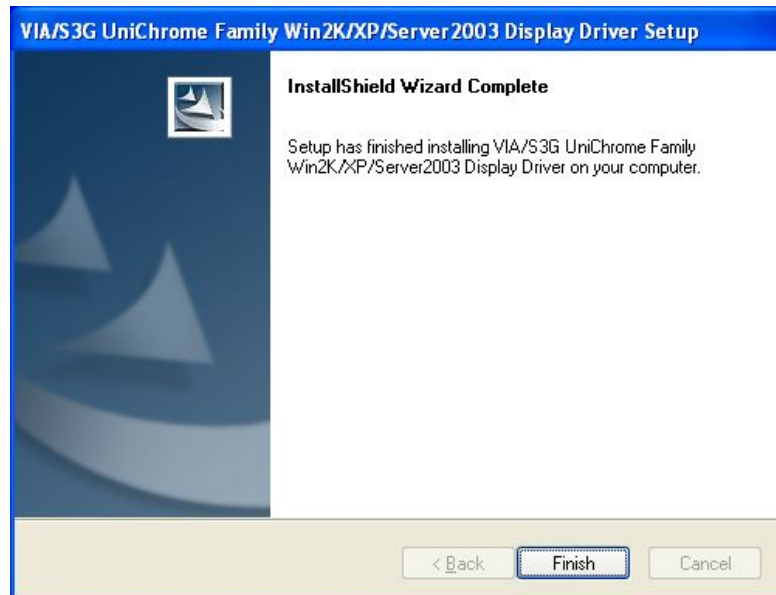
When the installation is completed successfully, the following screen appears. Click on the “Yes, I want to restart my computer now” radio button, then click on the “Finish” button to reboot your computer.



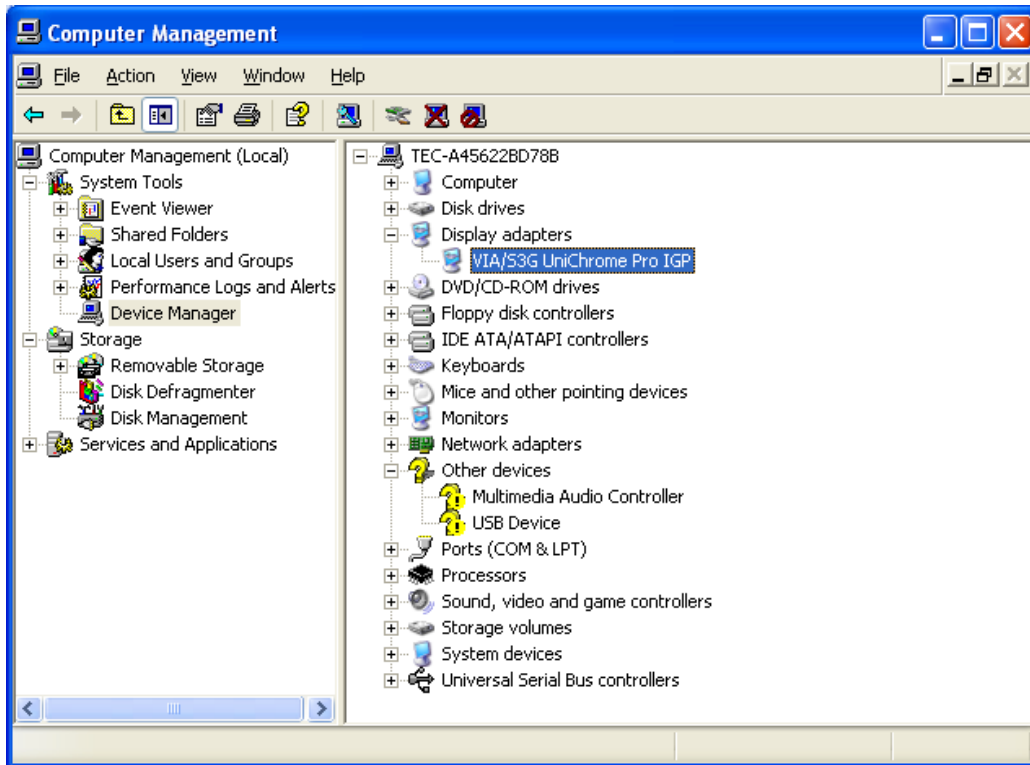
2.4 Installation of VIA Graphic Driver

Run “setup.exe” in the “ST-A10\VIA\Graphic_driver[CN700]\22.00.01w” folder in the Driver Kit CD-ROM, and the installation of the VIA graphic driver starts automatically.

When the installation is completed successfully, the following screen appears. Click on the “Finish” button.



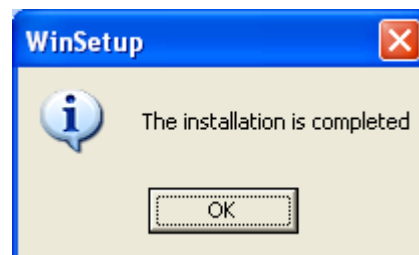
Open Device Manager to confirm the graphic driver has been installed.
Make sure that “VIA/S3G UniChrome Pro IGP” is registered under the “Display adapters” icon.



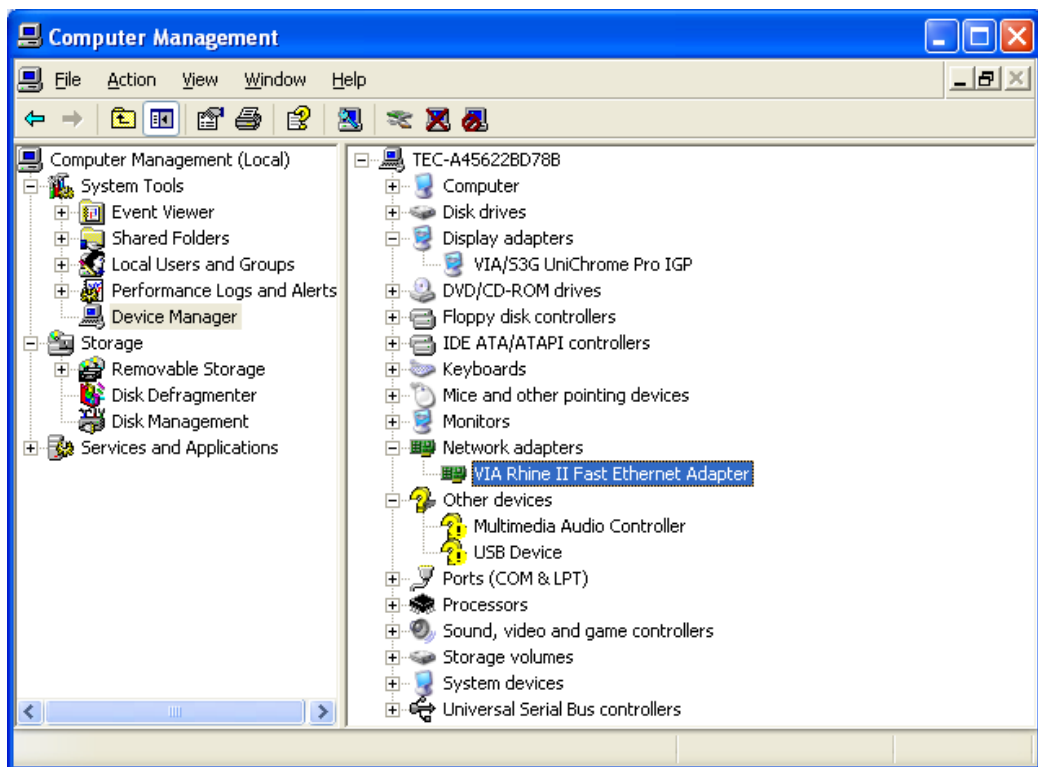
2.5 Installation of VIA Network Driver

Run “WinSetup.exe” in the “ST-A10\VIA\Lan_driver[VT8237 R Plus]
\01-Ethernet-rhine-ndism-x86-x64-368-setup\XP\X86” folder in the Driver Kit CD-ROM, and
the installation of the VIA network driver starts automatically.

When the installation is completed successfully, the following screen appears. Click on the
“OK” button to close the window.

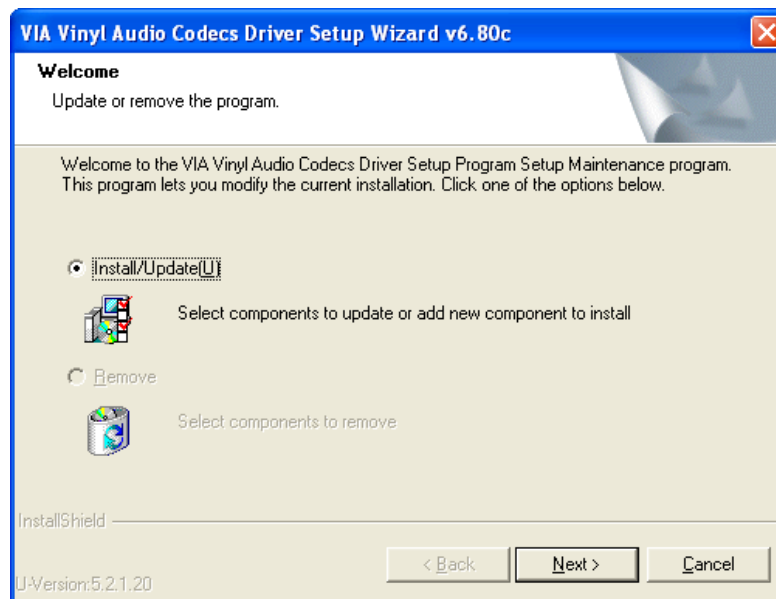


Open Device Manager to confirm the network driver has been installed.
Make sure that “VIA Rhine II Fast Ethernet Adapter” is registered under the “Network adapters” icon.

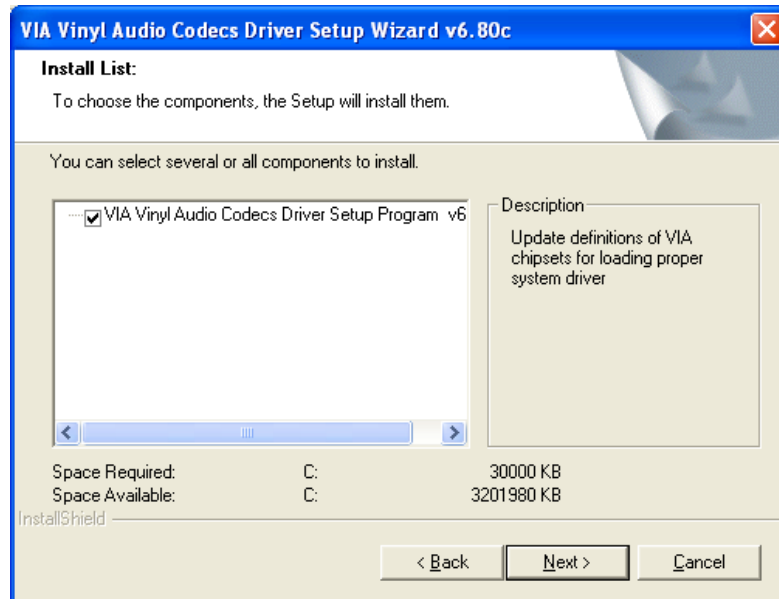


2.6 Installation of VIA Audio Driver

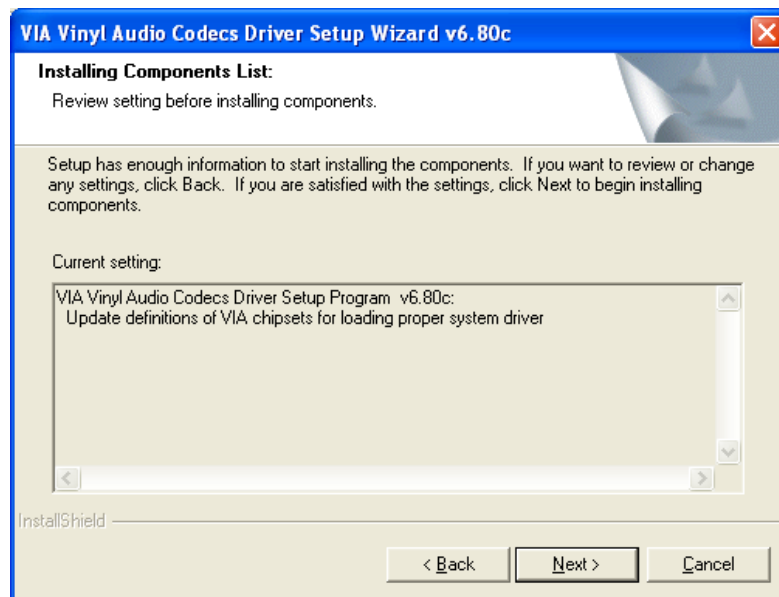
Run “SETUP.EXE” in the “ST-A10\VIA\Audio_driver[VT1616]\A1u680c” folder in the Driver Kit CD-ROM, and the following screen appears. Click on the “Install/Update” radio button, then click on the “Next” button.



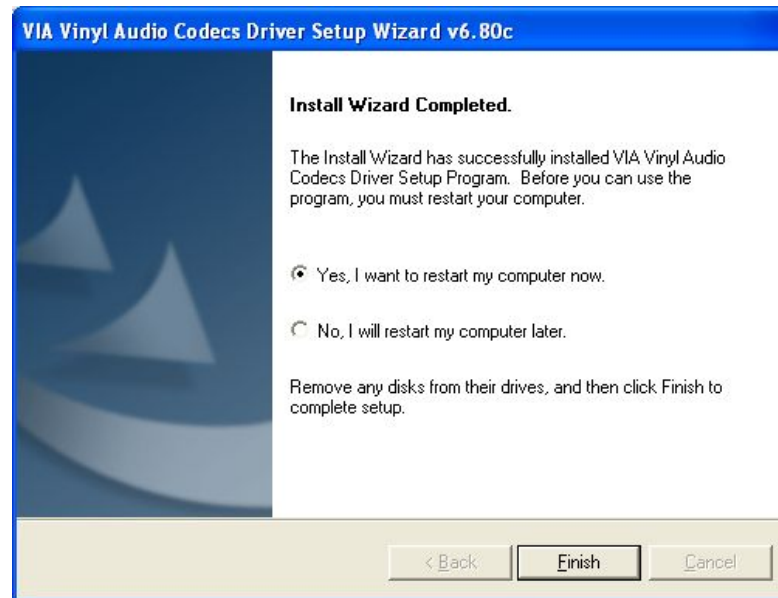
Click on the “VIA Vinyl Audio Codecs Driver Setup Program v6.80c” check box, then click on the “Next” button.



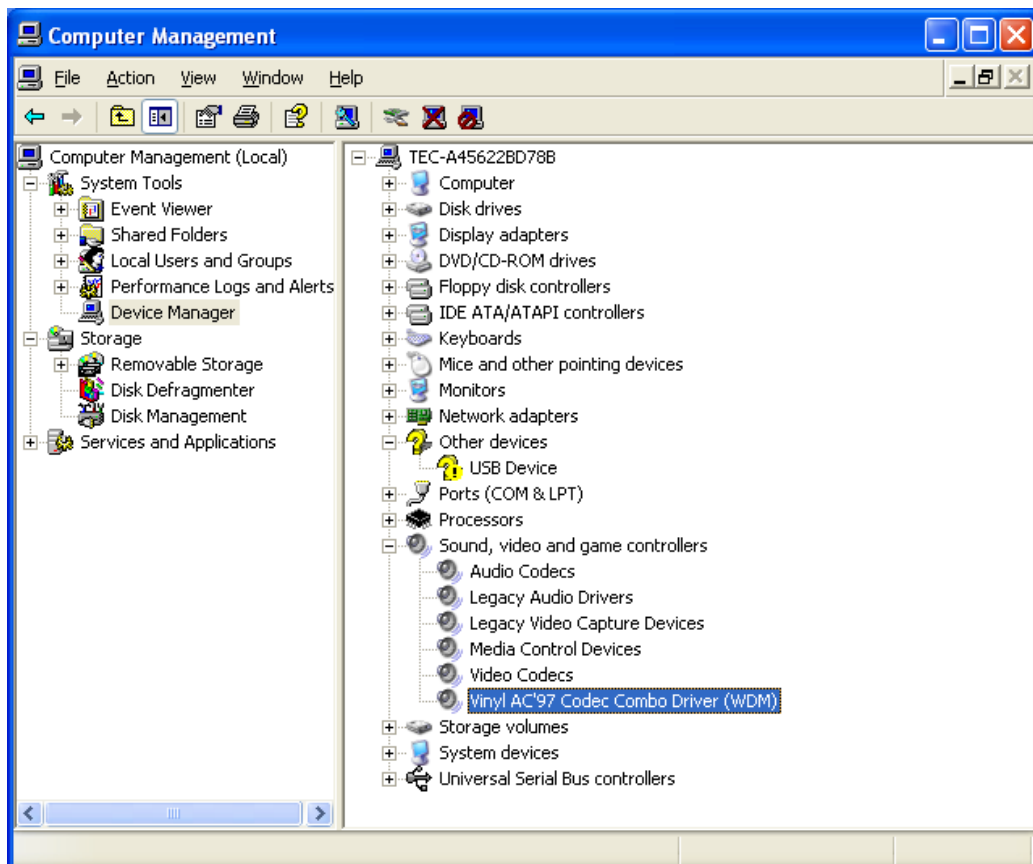
Make sure that “VIA Vinyl Audio Codecs Driver Setup Program v6.80c” is displayed in the “Current setting” box on the screen, then click on the “Next” button.



The installation of the VIA Vinyl Audio Codecs Driver starts automatically. When the installation is completed successfully, the following screen appears. Click on the “Yes, I want to restart my computer now” radio button, then click on the “Finish” button.



Open Device Manager to confirm the audio driver has been installed. Make sure that “Vinyl AC’97 Codec Combo Driver (WDM)” is registered under the “Sound, video and game controllers” icon.

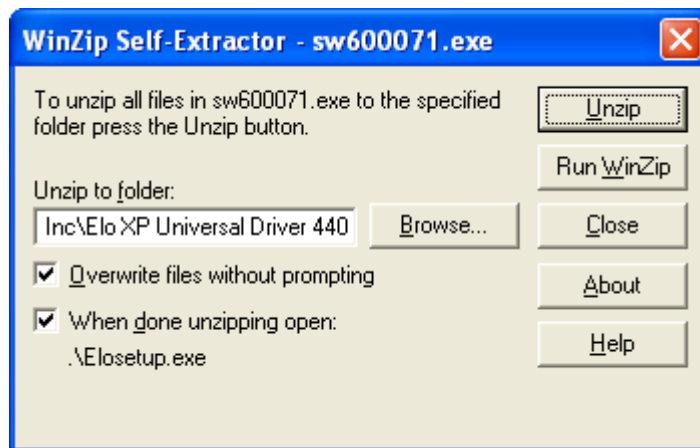


2.7 Installation of Elo Touch Panel Driver

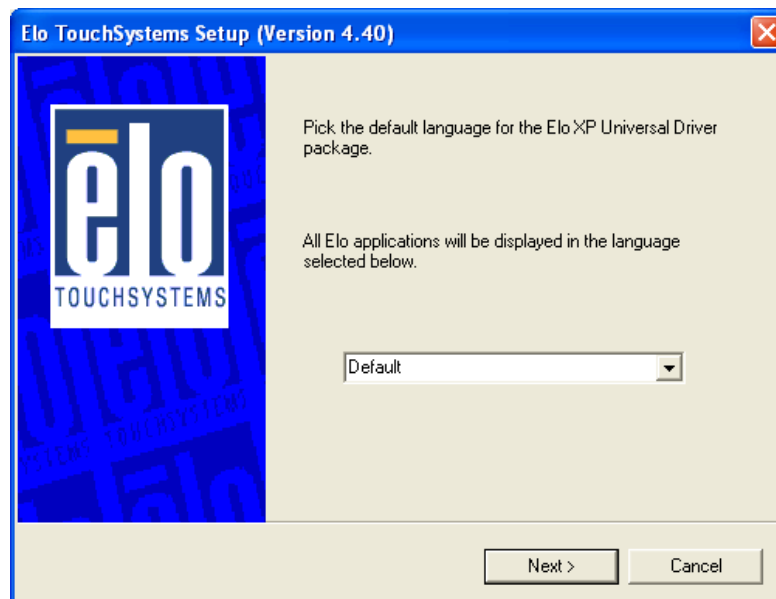
Run “sw600071.exe” in the “ST-A10\Tablet” folder in the Driver Kit CD-ROM, and the following screen appears. Click on the “OK” button.



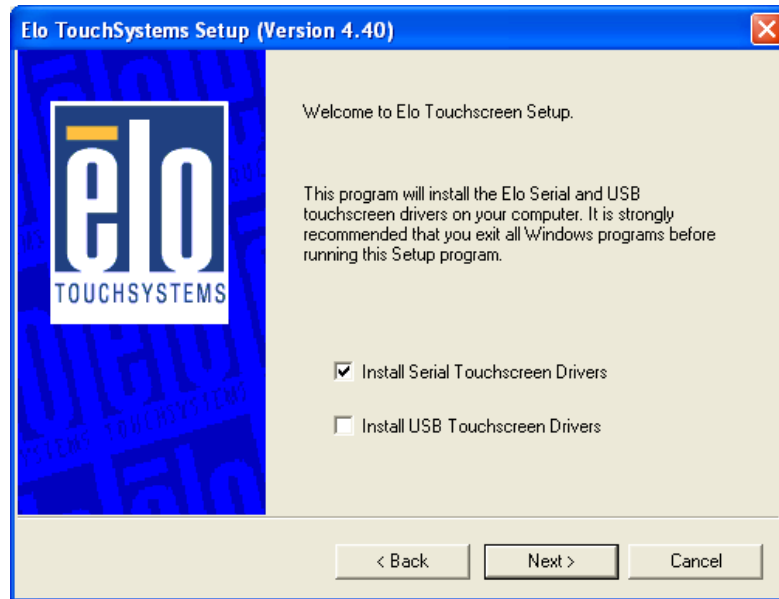
Click on the “Unzip” button, and the installer starts in the case of the following conditions after the files are decompressed.



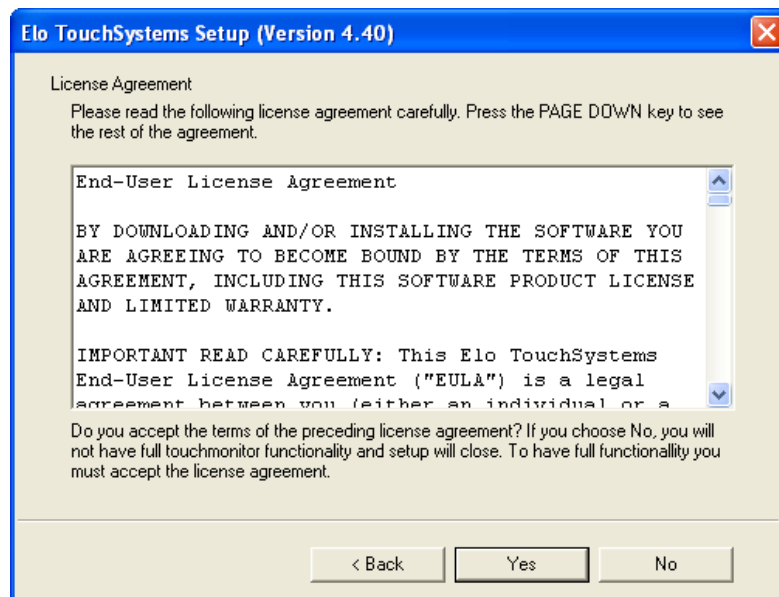
Choose a language, if necessary, then click on the “Next” button.



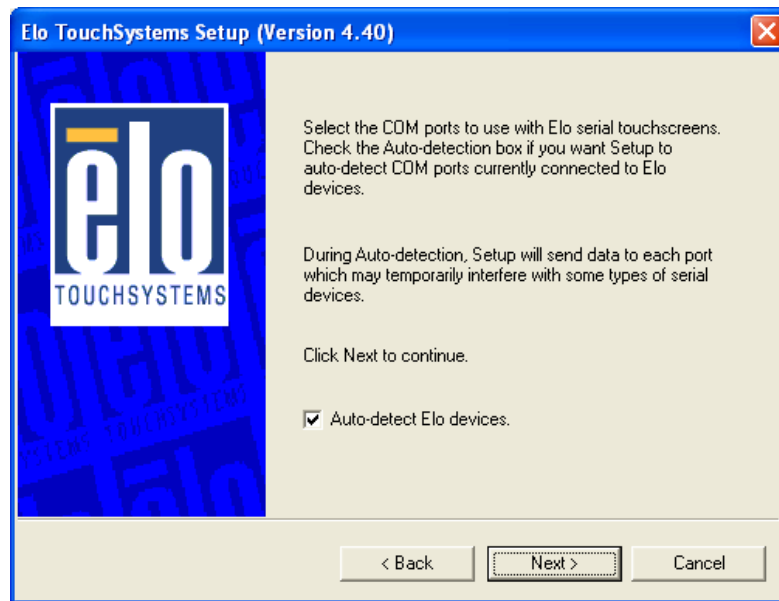
Click on the “Install Serial Touchscreen Drivers” check box, then click on the “Next” button.



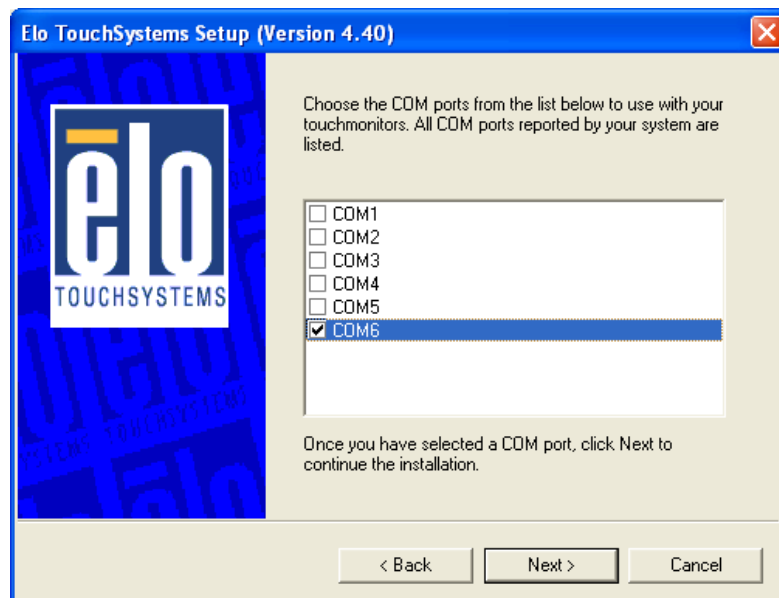
The “License Agreement” screen appears. Click on the “Yes” button.



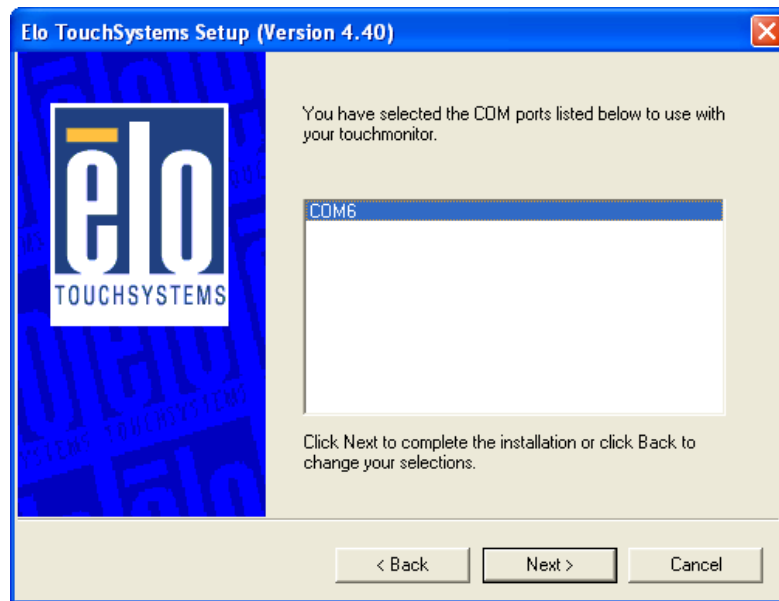
Click on the “Auto-detect Elo devices” check box, then click on the “Next” button.



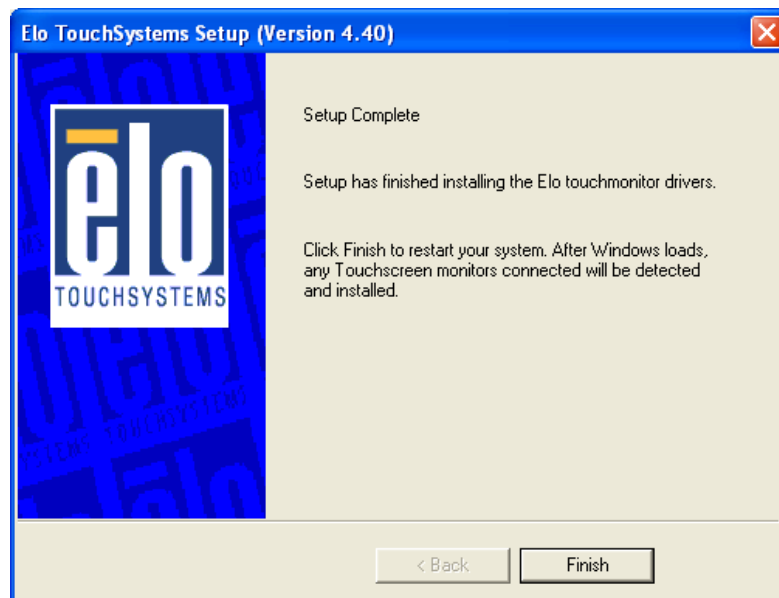
The touch panel connected to the ST-A10 is detected, and “COM6” is chosen. If “COM6” is not chosen, there may be a problem. Click on the “Next” button.



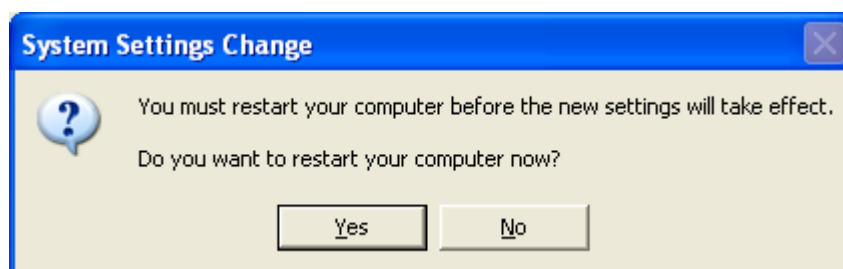
Confirm that “COM6” has been chosen, then click on the “Next” button.



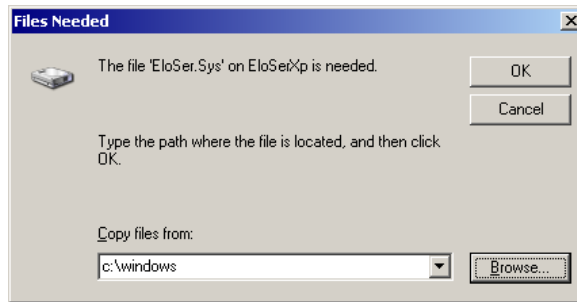
When the installation is completed successfully, the following screen appears. Click on the “Finish” button.



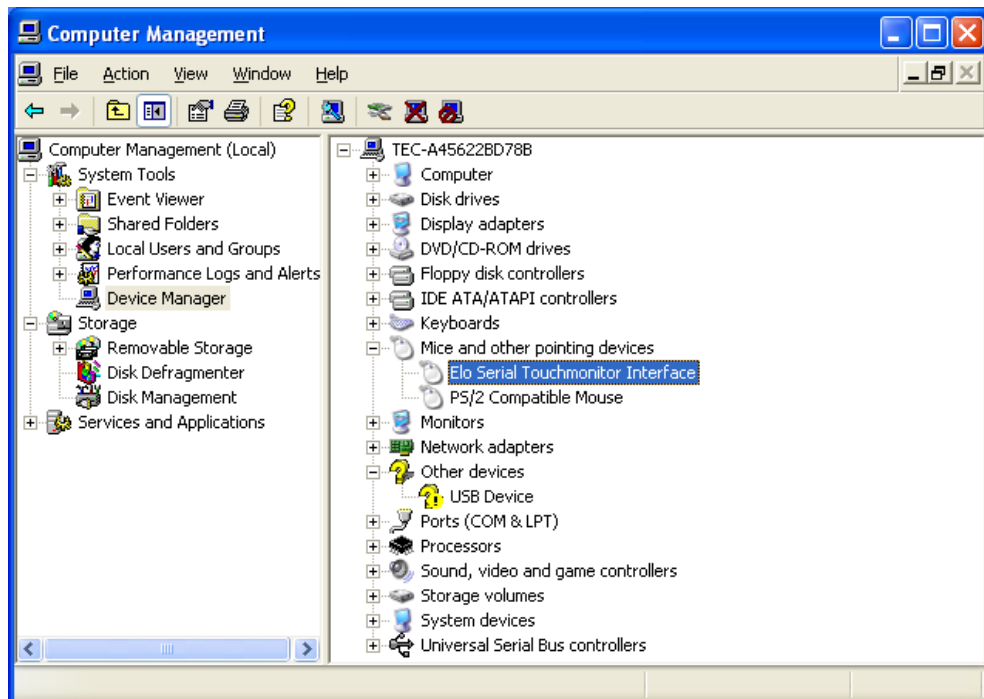
Click on the “Yes” button to reboot your computer.



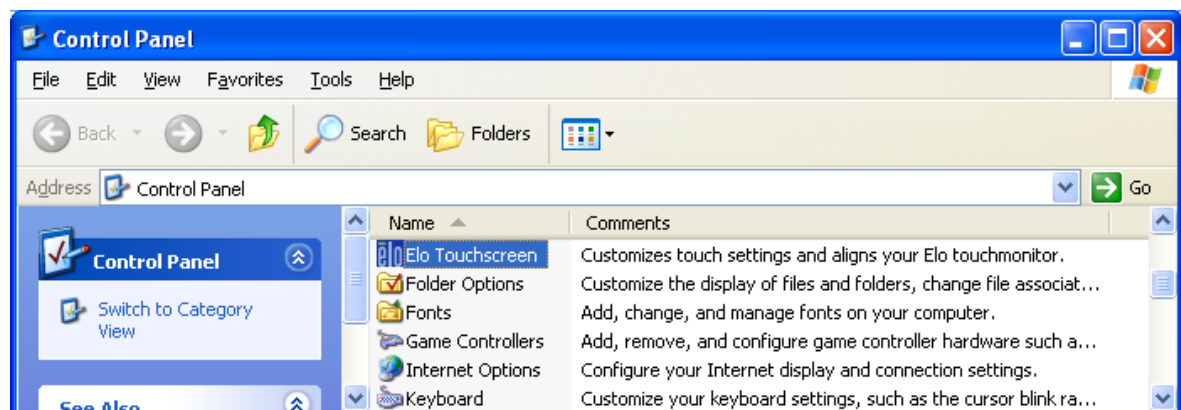
When the “Files needed” screen appears, specify “C:\Program Files\EloTouchSystems” in the “Copy files from:” box, then click on the “OK” button.



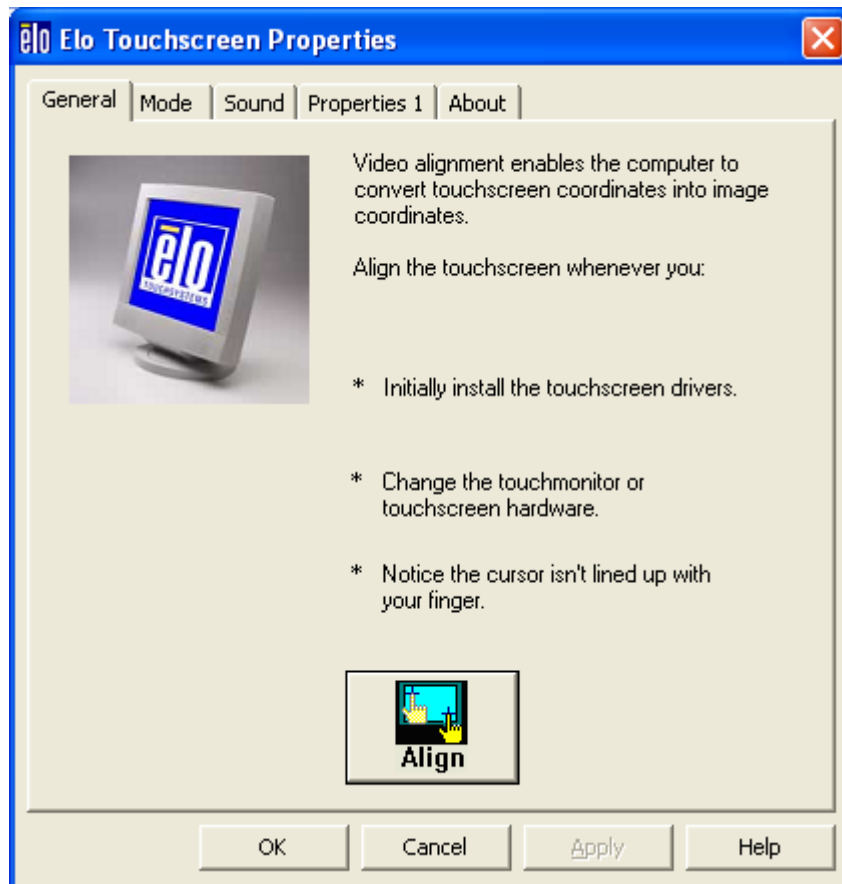
Open Device Manager to confirm the touch panel driver has been installed. Make sure that “Elo Serial Touchmonitor Interface” is registered under the “Mice and other pointing devices” icon.





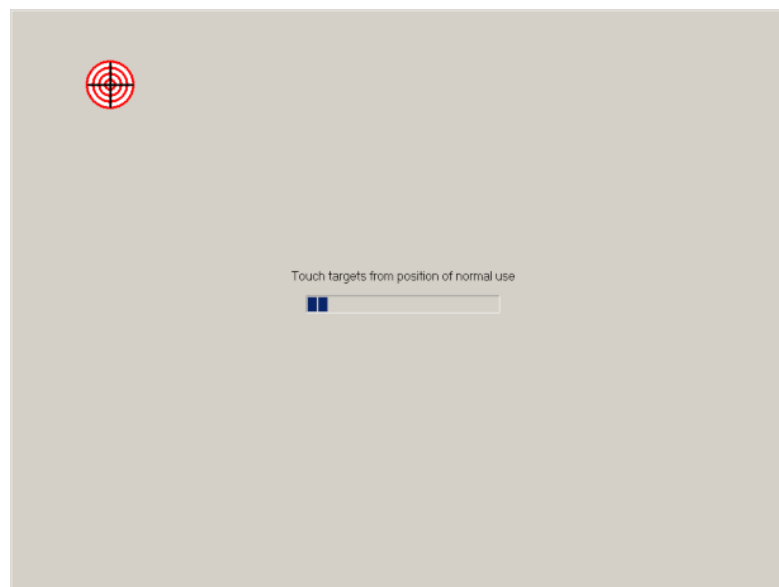
Next, perform calibration settings for the touch panel. Open Control Panel, and double-click on the “Elo Touchscreen” icon.



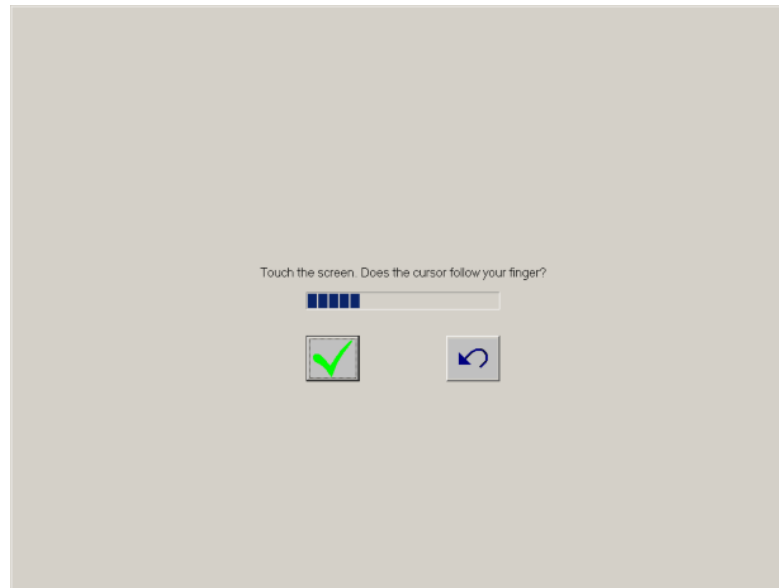
When the “Elo Touchscreen Properties” screen appears, click on the “General” tab, then click on the “Align” button.



The following calibration screen appears. Perform a calibration by touching the  mark whenever it appears. (The  mark appears three times.)



After the mark was touched three times, two buttons appear at the center of the screen. Click on the check mark button to complete the calibration.

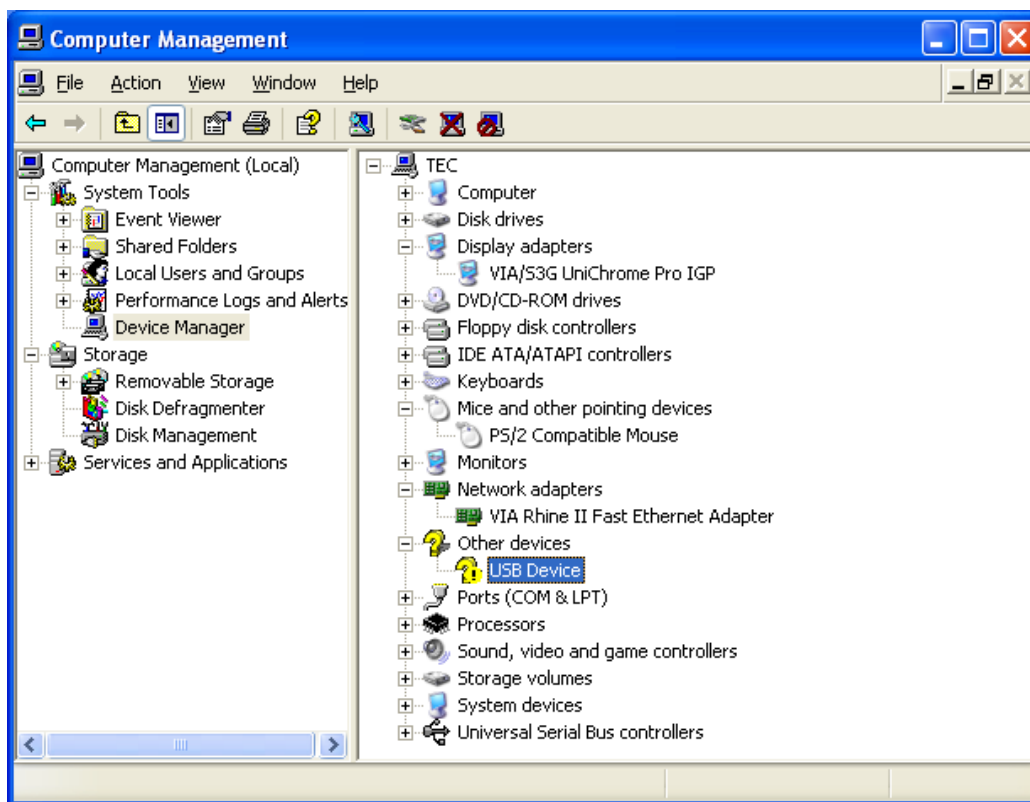


Click on the "OK" button.



2.8 Installation of the iButton Driver

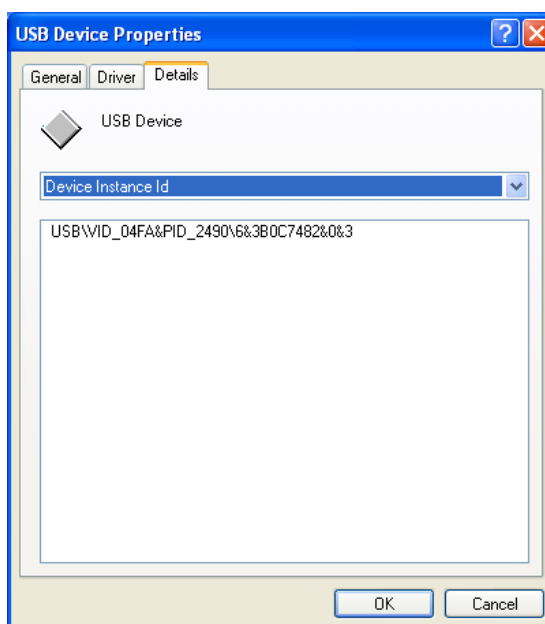
When the iButton is connected to the ST-A10, “USB Device” is shown with an exclamation mark (!) under the “Other devices” icon in the Device Manager screen.



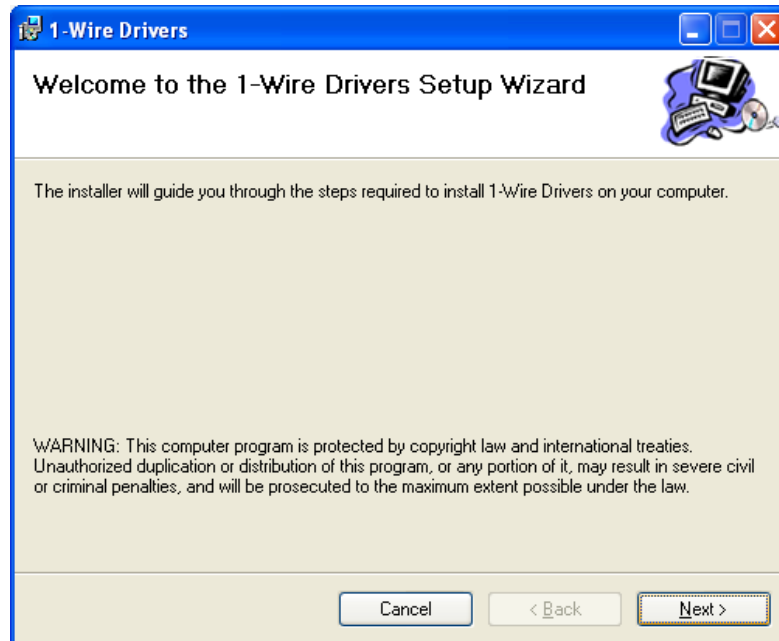
Note: How to confirm the USB Device is the iButton

Open the “USB Device Properties” screen by right-clicking “USB Device” and selecting “Properties” on the “Device Manager” screen.

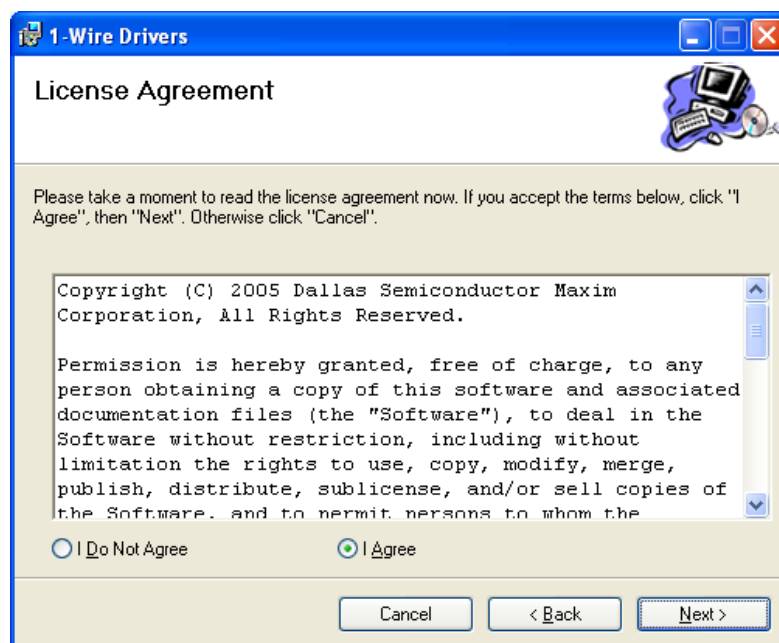
On the “USB Device Properties” screen, click on the “Details” tab, then check that the USB vendor ID is 04FA.



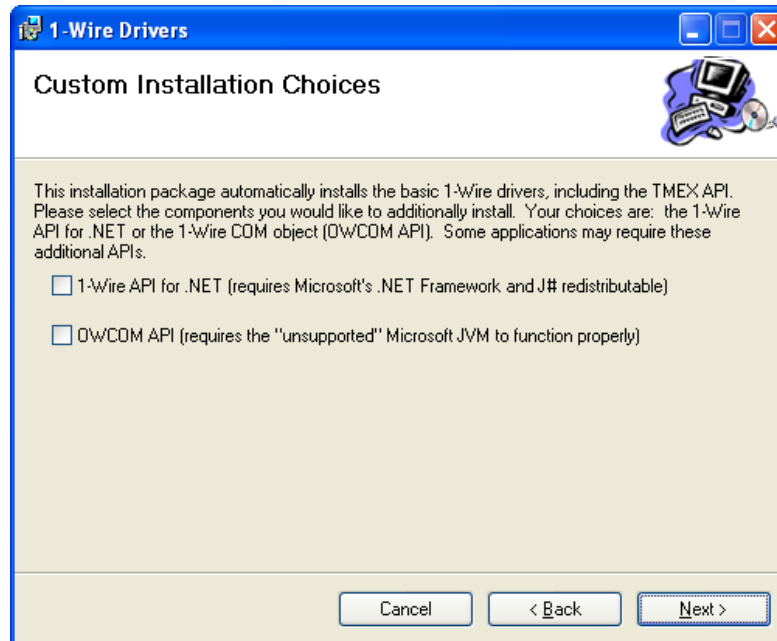
Run "Setup.Exe" in the "ST-A10\iButton\iButton_driver" folder in the Driver Kit CD-ROM, and the following screen appears. Click on the "Next" button.



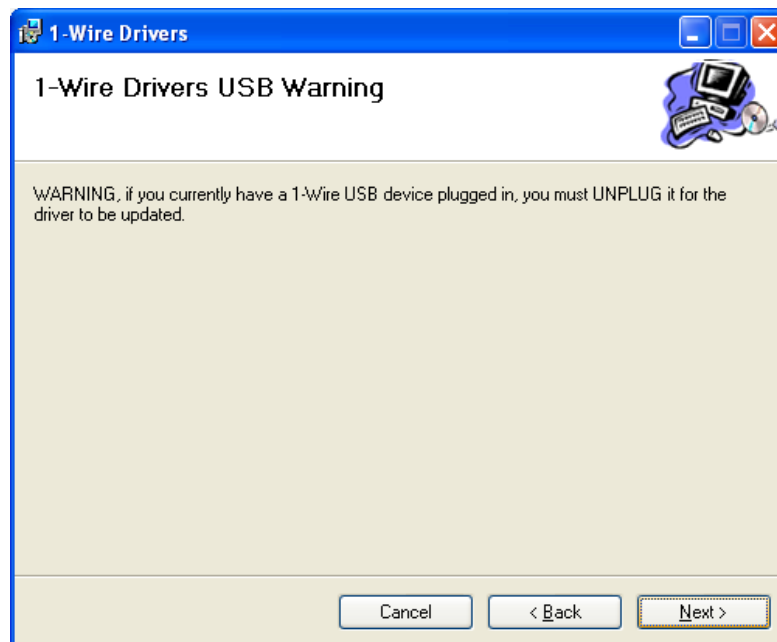
When the "License Agreement" screen appears, click on the "I Agree" radio button, then click on the "Next" button.



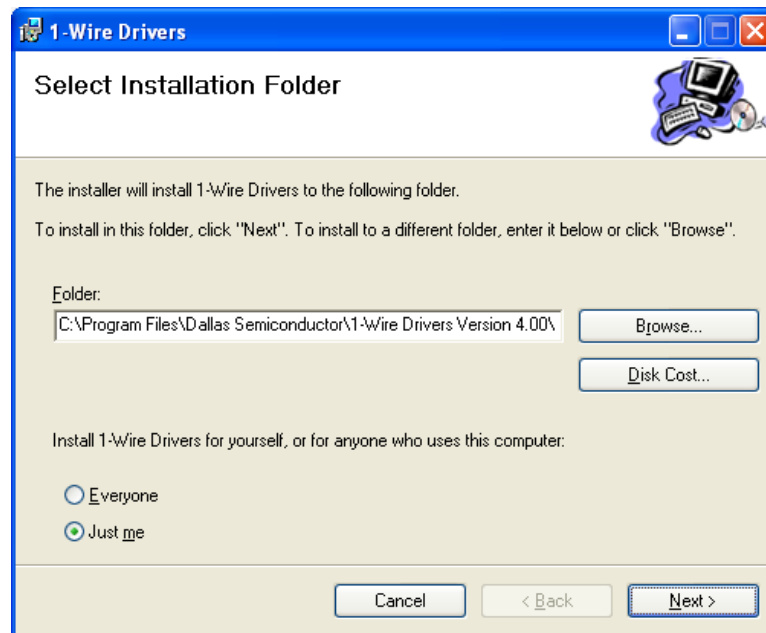
When the Keylock OPOS Control is used, both of “1-Wire API for .NET” and “OWCOM API” are not required. Choose one of the APIs to be required, and click on the “Next” button.



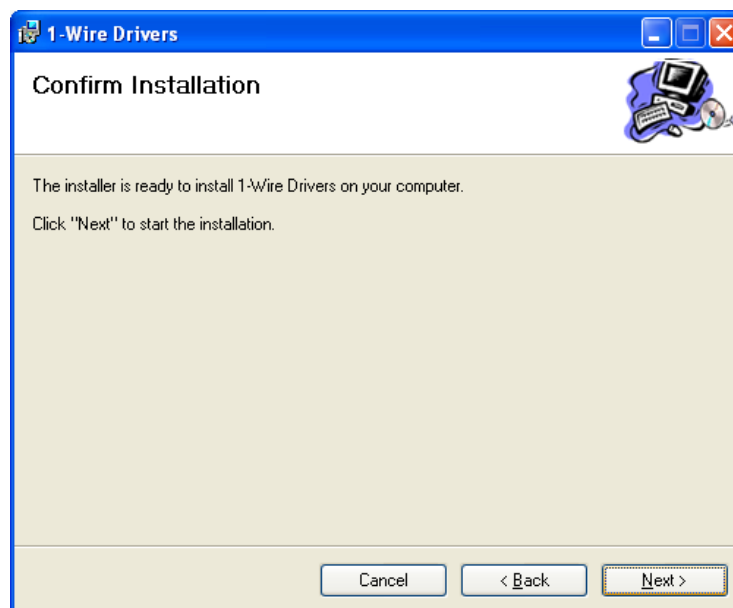
Although the following warning message appears, click on the “Next” button.



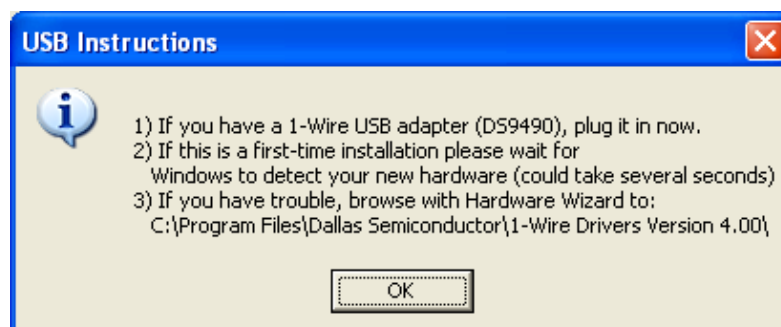
Configure the necessary settings, then click on the “Next” button.



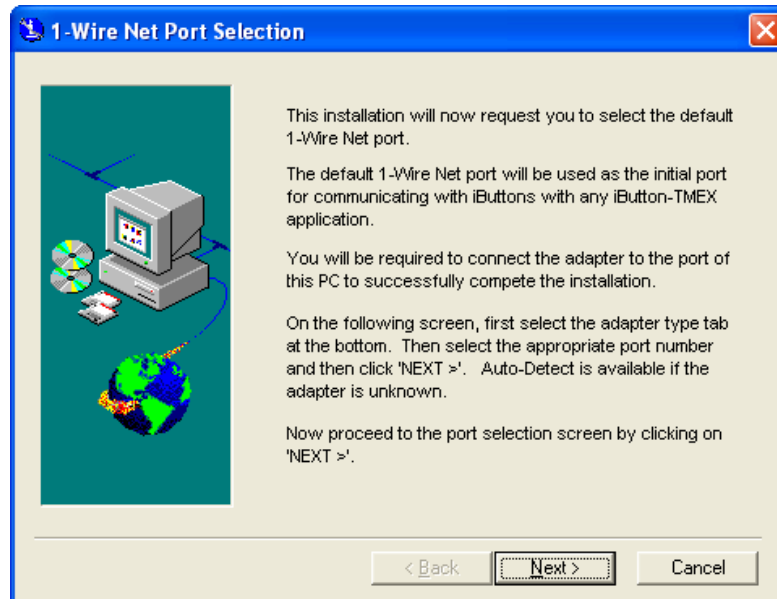
Click on the “Next” button.



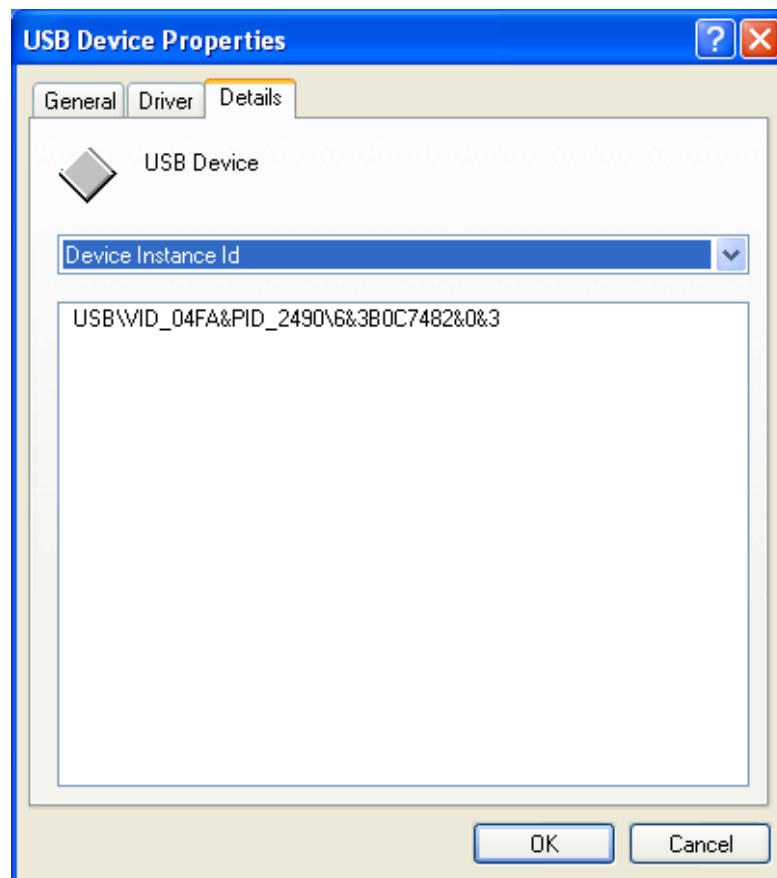
Click on the “OK” button.



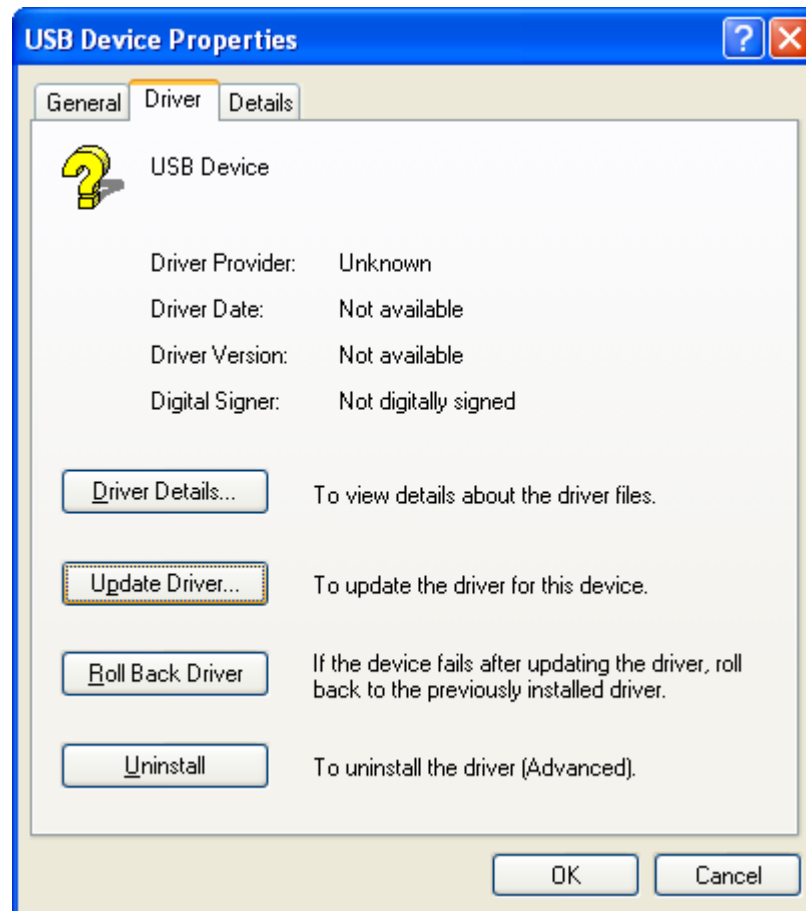
When the “1-Wire Net Port Selection” screen appears, do not click on the “Next” button. Just leave it alone. (You will click on the “Next” button later.)



Open Device Manager, right-click on the “USB Device” icon, then click on “Properties” to open the “USB Device Properties” screen. Click on the “Details” tab and check the description.



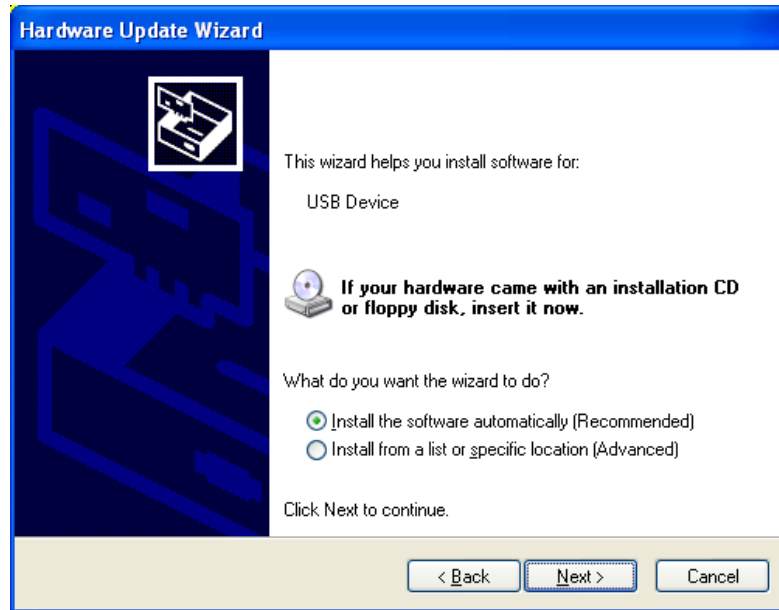
Click on the “Driver” tab, then click on the “Update Driver...” button.



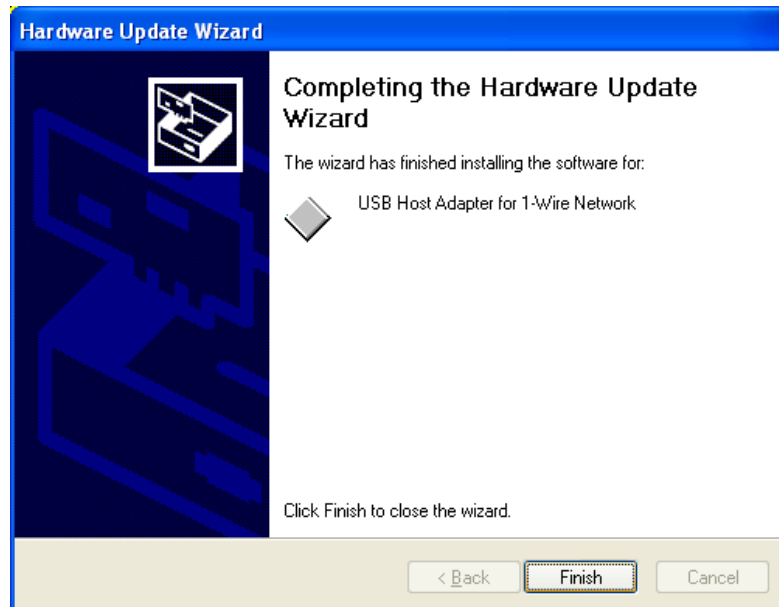
Click on the “No, not this time” radio button, then click on the “Next” button.



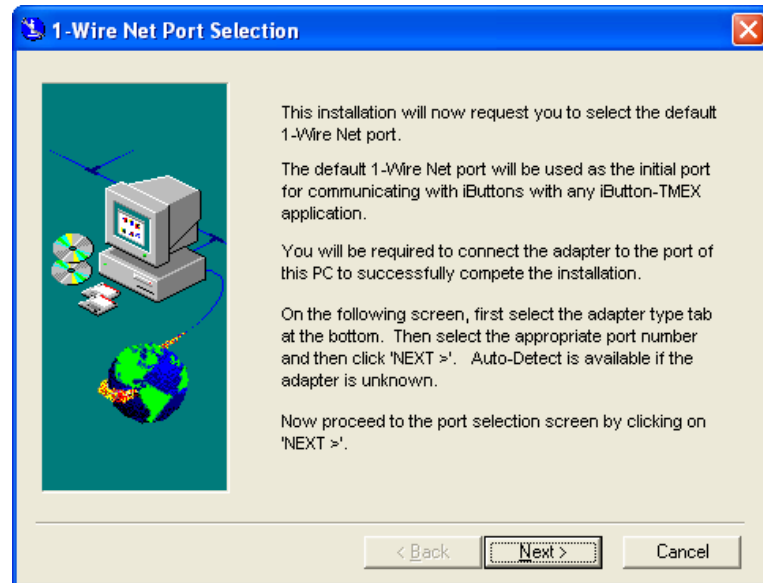
Click on the “Install the software automatically (Recommended)” radio button, then click on the “Next” button.



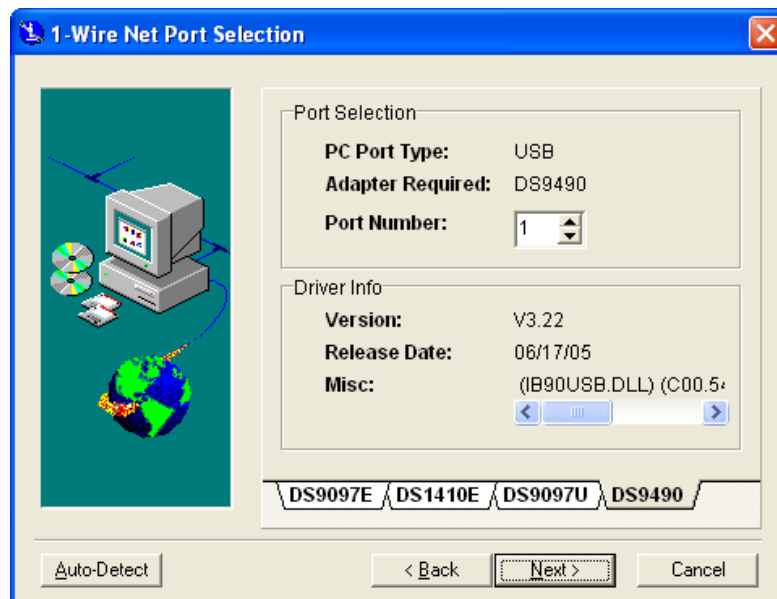
When the following screen appears, click on the “Finish” button to complete the update process.



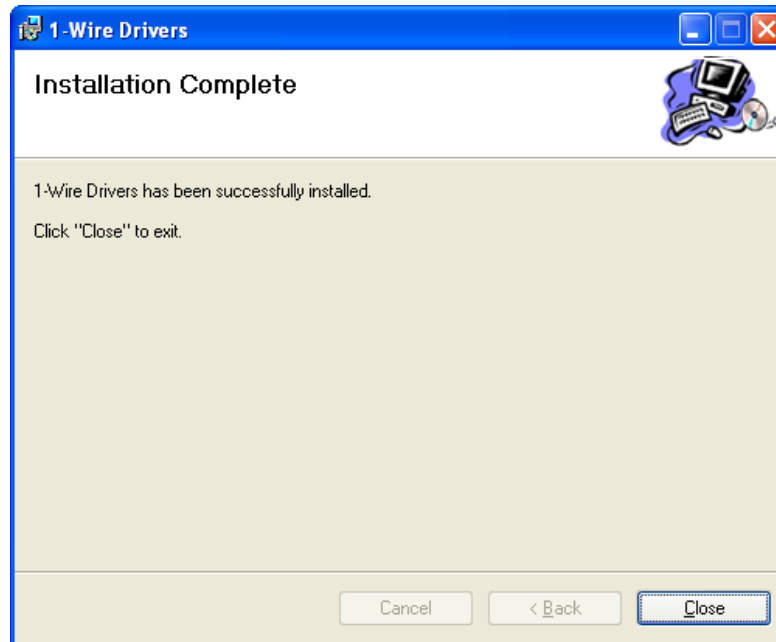
Back to the “1-Wire Net Port Selection” screen, and click on the “Next” button.



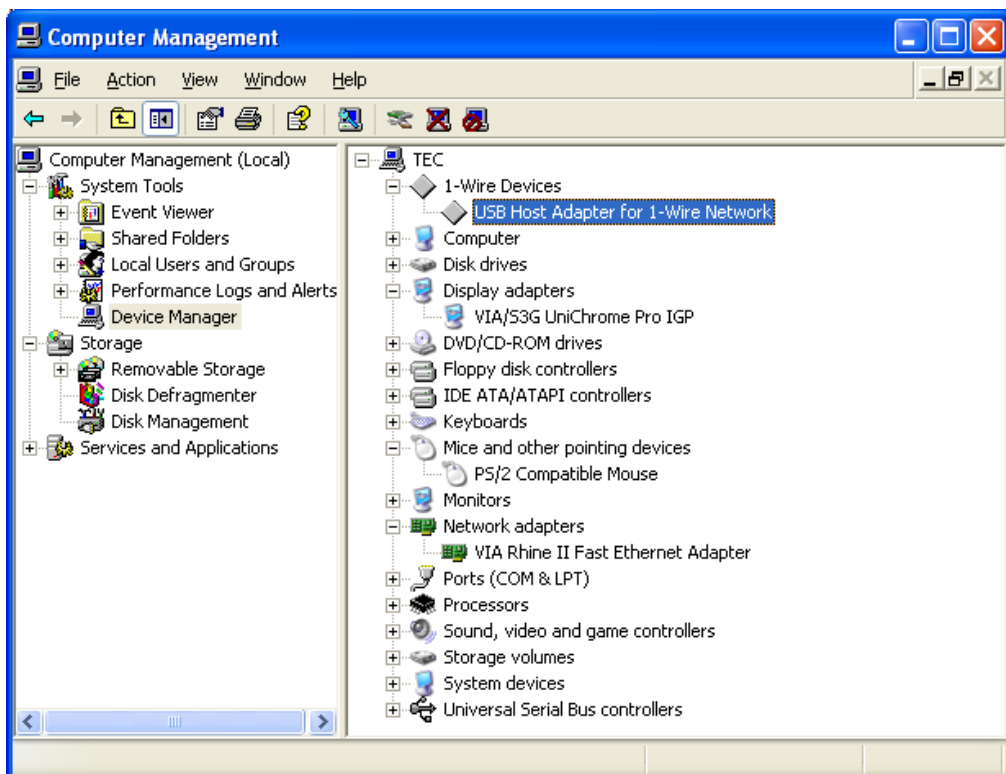
Click on the “Next” button.



When the following screen appears, click on the “Close” button to complete the installation.



Open Device Manager to confirm the iButton has been installed. Make sure that “USB Host Adapter for 1-Wire Network” is registered under the “1-Wire Devices” icon.



3. Setup of Windows2000 (ST-A10)

3.1 Installation of Service Pack

For the ST-A10, an operating system of Windows 2000 (Service Pack 3 or later) must be installed.

When installing the operating system using a bootable CD-ROM, use the bootable CD-ROM supporting Windows 2000 (Service Pack 3 or later).

When installing it via the network, Service Pack 3 or later needs to be installed in advance.

3.2 Installation of Windows

As the ST-A10 is provided with the SATA hard disk drive (HDD), a driver floppy disk (FD) to access the SATA HDD needs to be prepared prior to the installation of Windows. This SATA driver FD is required right after the Windows 2000 installer is started and the "F6" key is pressed.

[How to Make SATA Driver FD]

Copy all files in the \ST-A10\VIA\SATA RAID[VT8237 R Plus]\VIA_RAID_V530C\drvdisk\i386 folder in the Driver Kit CD-ROM to a floppy disk.

[Example of Pre-installation of Windows Operating System]

As soon as a CD-ROM boot installation starts, a message is displayed at the bottom left area of the screen as shown below. Press the [F6] key. (Note the message is shown only for about 5 seconds.)



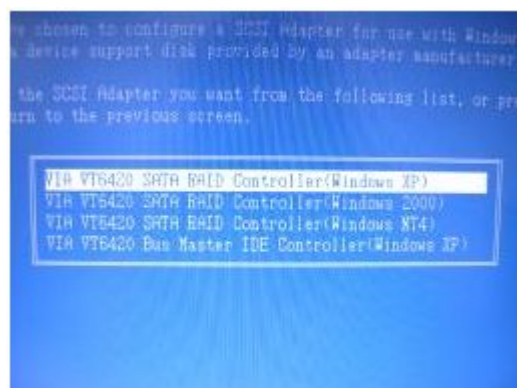
When the following screen appears while the operating system is being installed, press the [S] key.



When the following screen appears, insert the SATA driver FD you prepared.



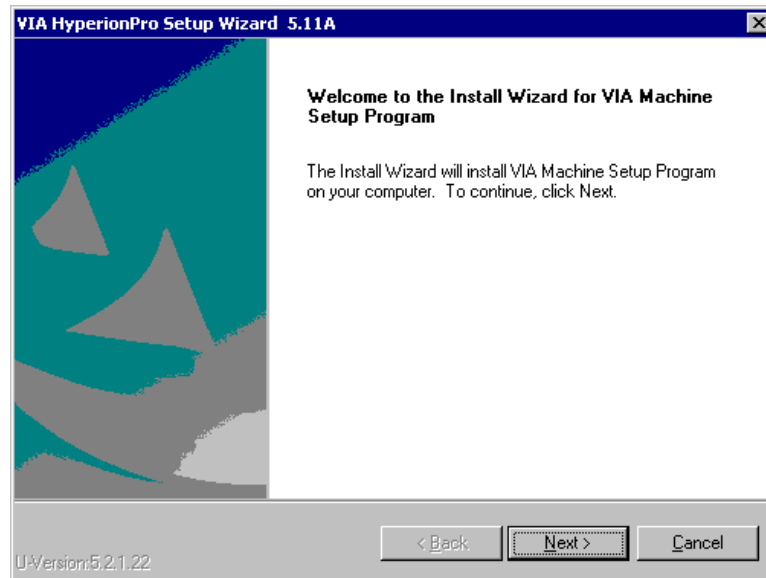
Select the operating system you use from the menu, that is, "Windows 2000".



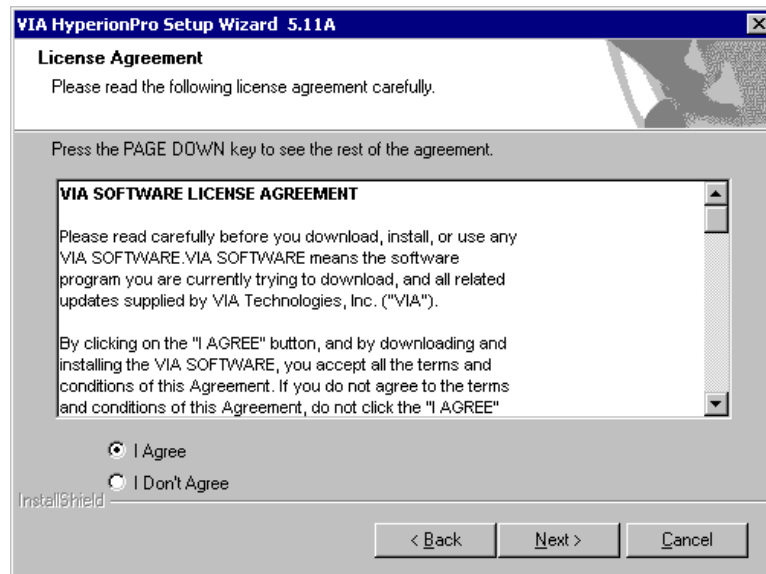
When the driver is installed successfully, the operating system installation screen appears again. Continue installing the operating system following the instructions.

3.3 Installation of VIA Chipset Program

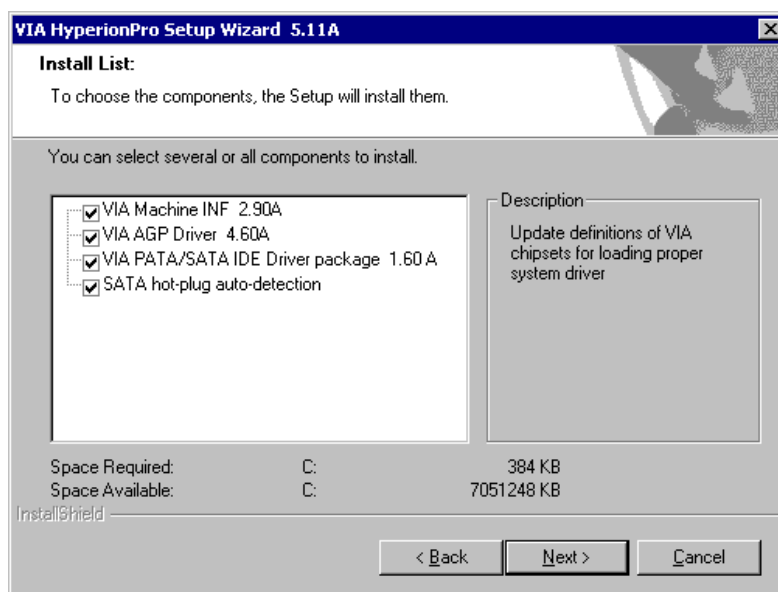
Run "SETUP.EXE" in the "ST-A10\VIA\Chipset[CN700]\VIA_HyperionPro_V511A" folder in the Driver Kit CD-ROM, and the following screen appears. Click on the "Next" button.



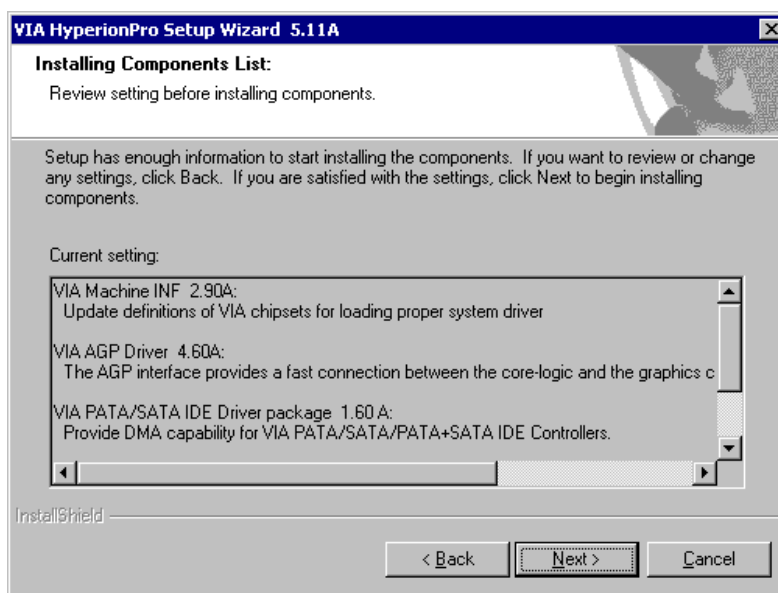
The "License Agreement" screen appears. Click on the "I Agree" radio button, then click on the "Next" button.



Click on the “VIA Machine INF 2.90A”, “VIA AGP Driver 4.60A”, “VIA PATA/SATA IDE Driver package 1.60A”, and “SATA hot-plug auto-detection” check boxes, then click on the “Next” button.



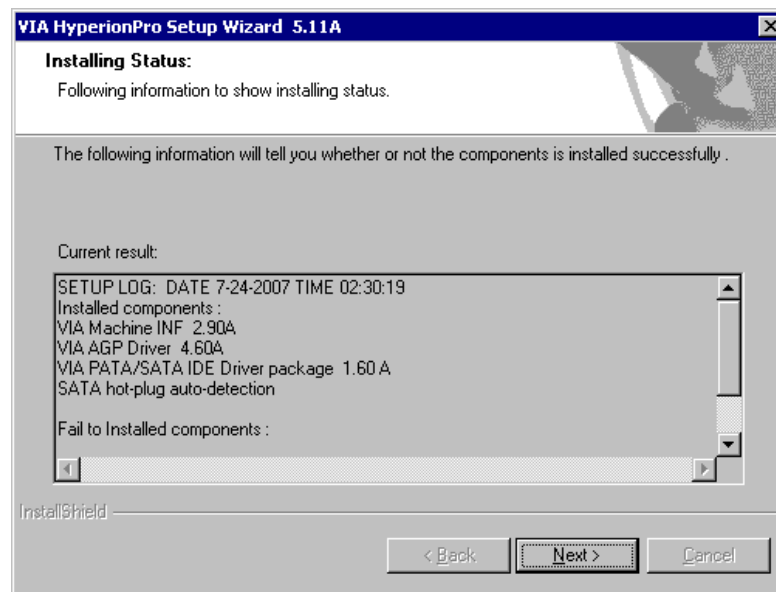
Make sure that “VIA Machine INF 2.90A”, “VIA AGP Driver 4.60A”, “VIA PATA/SATA IDE Driver package 1.60A”, and “SATA hot-plug auto-detection” are displayed in the “Current setting” box on the screen, then click on the “Next” button.



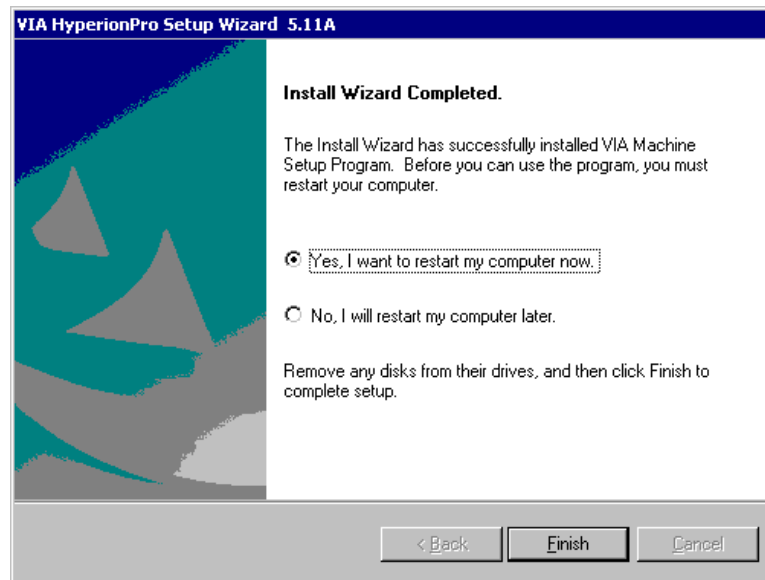
When the “Digital Signature Not Found” screen is displayed, click on the “Yes” button.



Check the components currently installed, then click on the “Next” button.



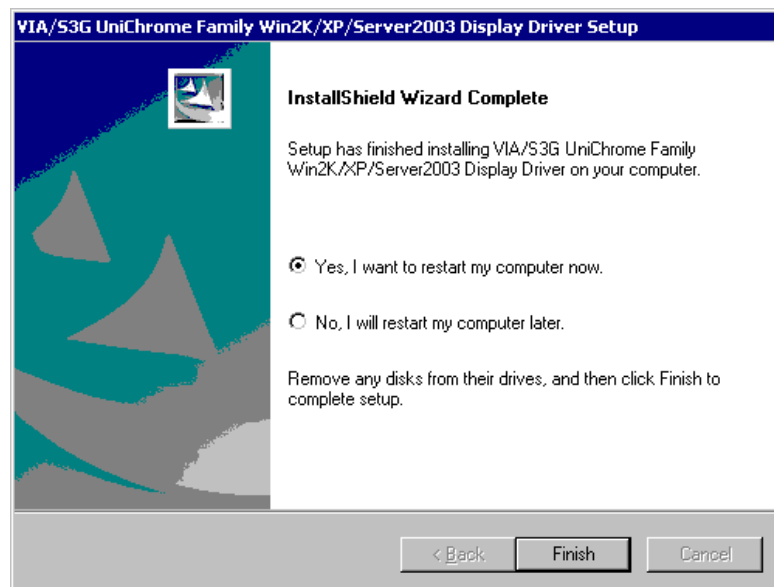
When the installation is completed successfully, the following screen appears. Click on the “Yes, I want to restart my computer now” radio button, then click on the “Finish” button to reboot your computer.



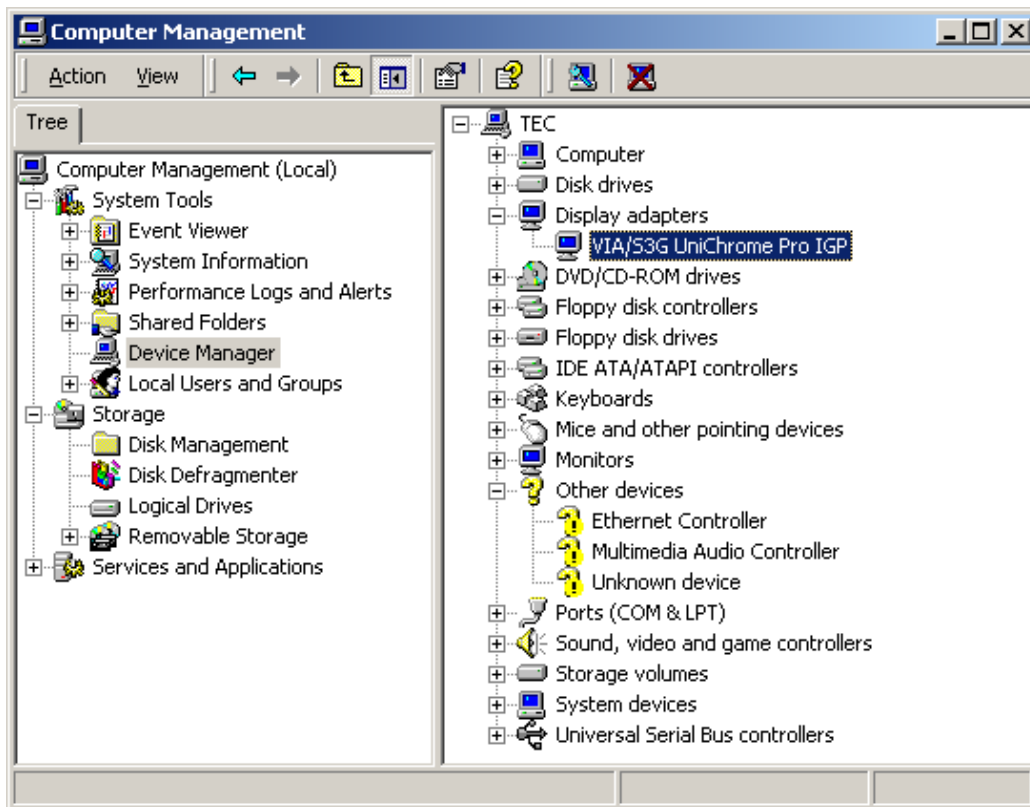
3.4 Installation of VIA Graphic Driver

Run “setup.exe” in the “ST-A10\VIA\Graphic_driver[CN700]\22.00.01w” folder in the Driver Kit CD-ROM, and installation of the VIA graphic driver starts automatically.

When the installation is completed successfully, the following screen appears. Click on the “Yes, I want to restart my computer now” radio button, then click on the “Finish” button.



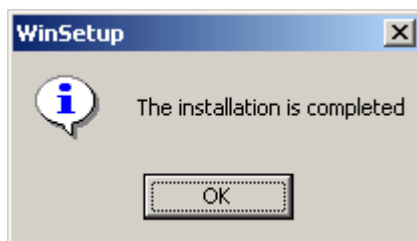
Open Device Manager to confirm the graphic driver has been installed.
Make sure that “VIA/S3G UniChrome Pro IGP” is registered under the “Display adapters” icon.



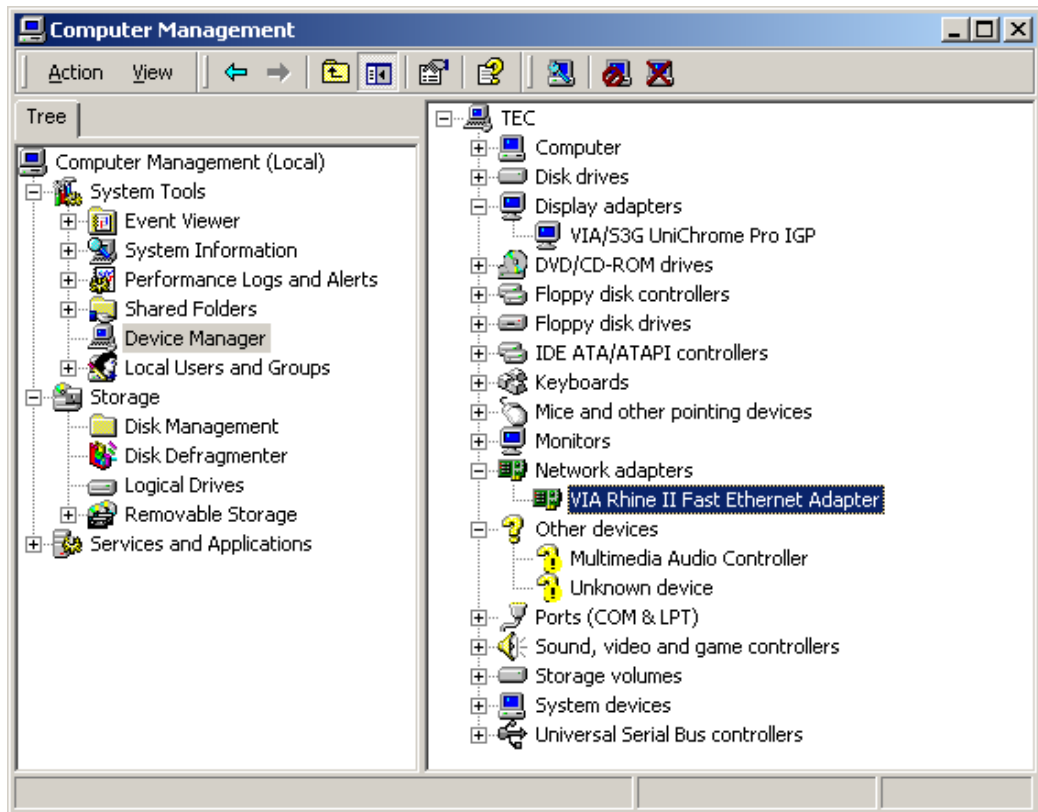
3.5 Installation of VIA Network Driver

Run “WinSetup.exe” in the “ST-A10\VIA\Lan_driver[VT8237 R Plus] \01-Ethernet-rhine-ndism-x86-x64-368-setup\XP\X86” folder in the Driver Kit CD-ROM, and the installation of the VIA network driver starts automatically.

When the installation is completed successfully, the following screen appears. Click on the “OK” button to close the window.

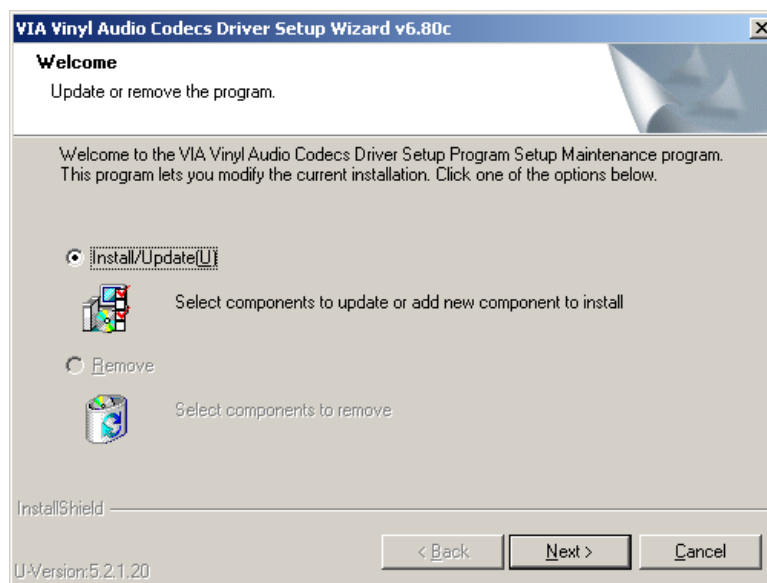


Open Device Manager to confirm the network driver has been installed. Make sure that “VIA Rhine II Fast Ethernet Adapter” is registered under the “Network adapters” icon.

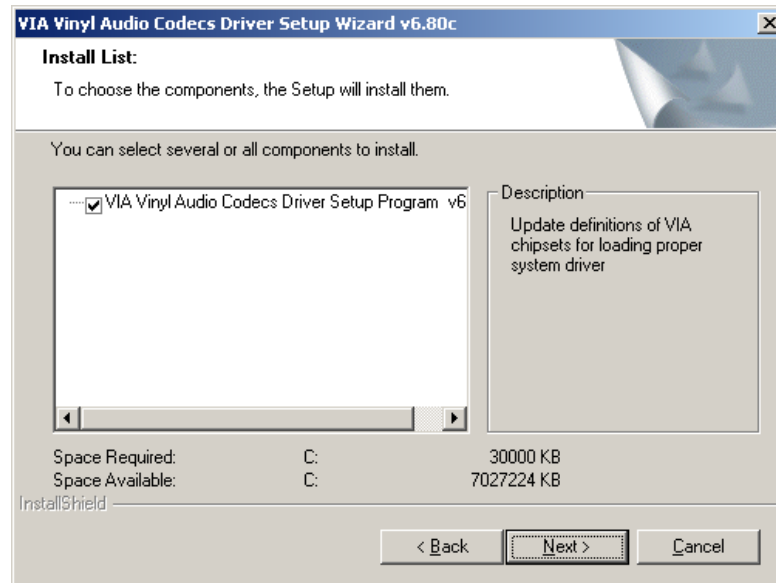


3.6 Installation of VIA Audio Driver

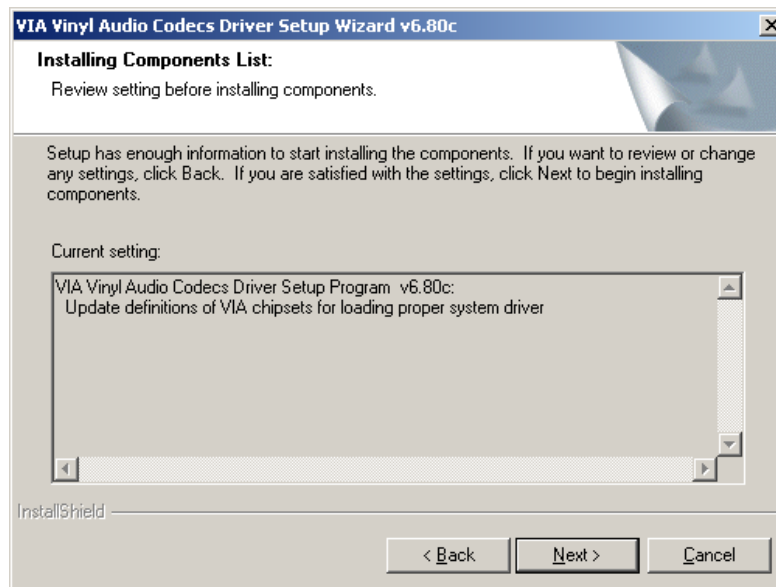
Run “SETUP.EXE” in the “ST-A10\VIA\Audio_driver[VT1616]\A1u680c” folder in the Driver Kit CD-ROM, and the following screen appears. Click on the “Install/Update” radio button, then click on the “Next” button.



Click on the “VIA Vinyl Audio Codecs Driver Setup Program v6.80c” check box, then click on the “Next” button.



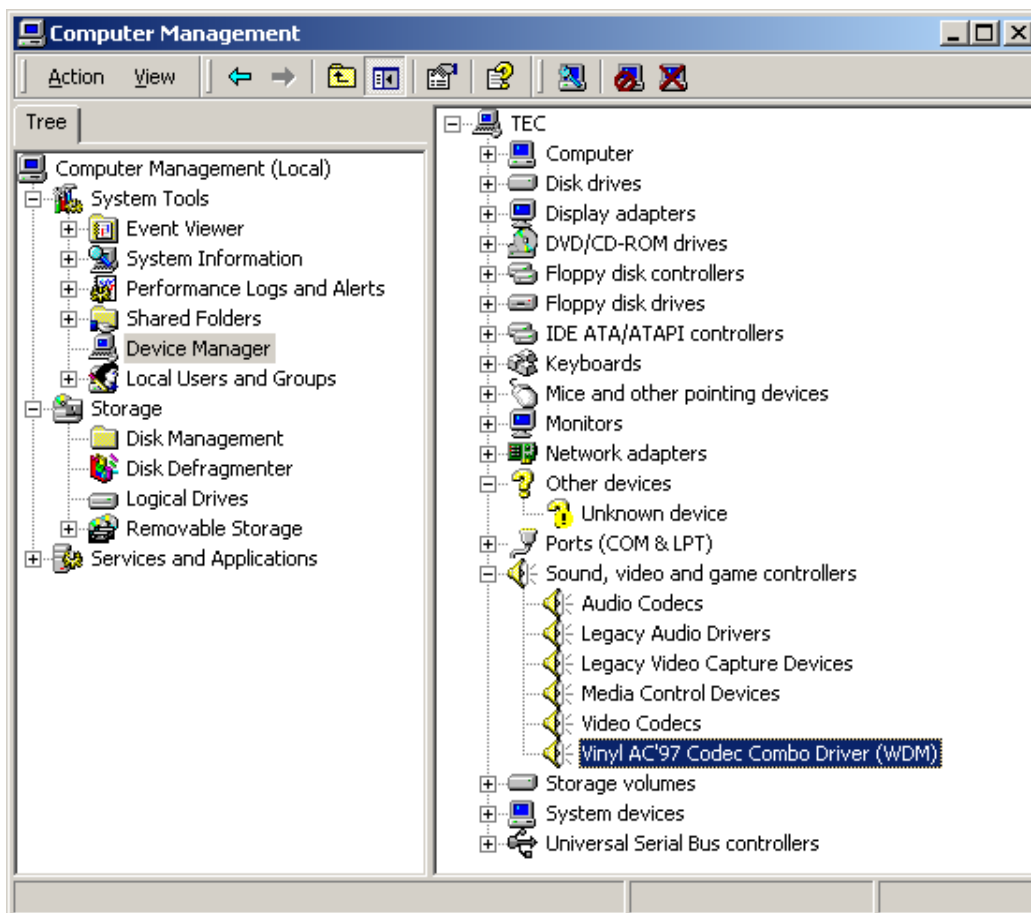
Make sure that “VIA Vinyl Audio Codecs Driver Setup Program v6.80c” is displayed in the “Current setting” box on the screen, then click on the “Next” button.



The installation of the VIA Vinyl Audio Codecs Driver starts automatically. When the installation is completed successfully, the following screen appears. Click on the “Yes, I want to restart my computer now” radio button, then click on the “Finish” button.

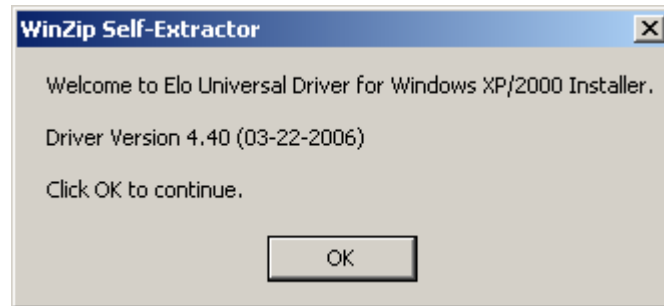


Open Device Manager to confirm the audio driver has been installed. Make sure that “Vinyl AC’97 Codec Combo Driver (WDM)” is registered under the “Sound, video and game controllers” icon.

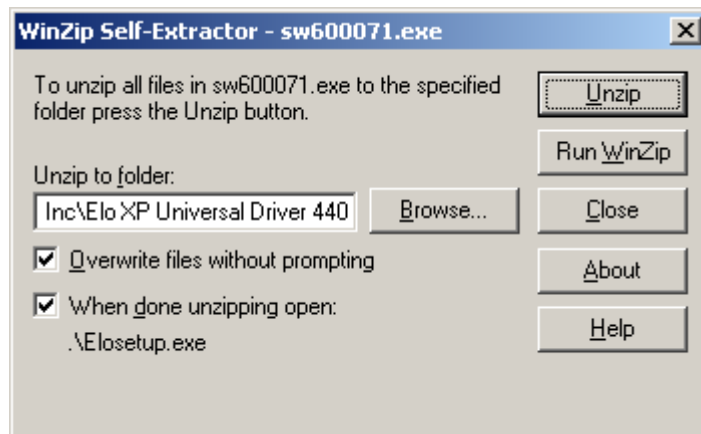


3.7 Installation of Elo Touch Panel Driver

Run “sw600071.exe” in the “ST-A10\Tablet” folder in the Driver Kit CD-ROM, and the following screen appears. Click on the “OK” button.



Click on the “Unzip” button, and the installer starts in the case of the following conditions after the files are decompressed.



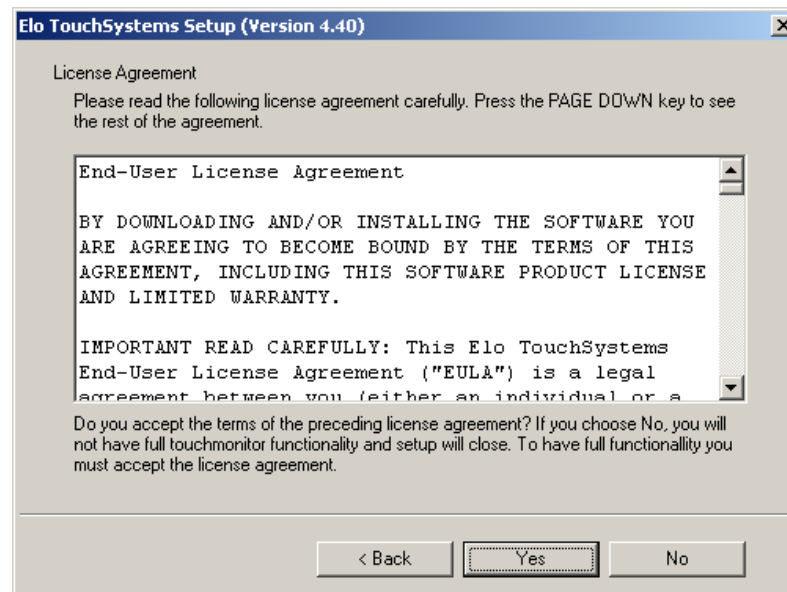
Choose a language, if necessary, then click on the “Next” button.



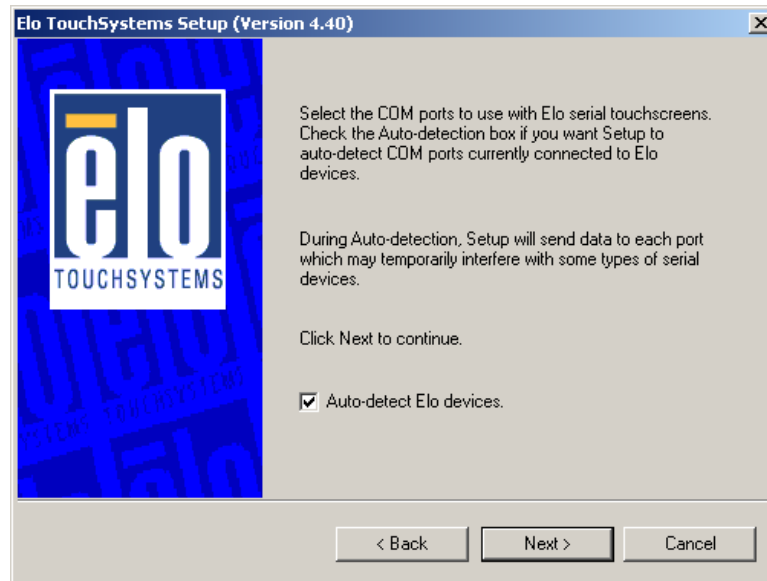
Click on the “Install Serial Touchscreen Drivers” check box, then click on the “Next” button.



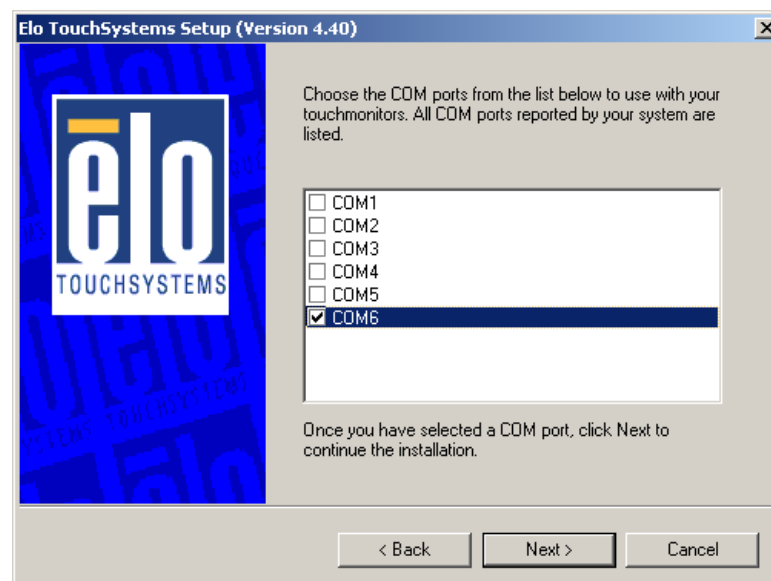
The “License Agreement” screen appears. Click on the “Yes” button.



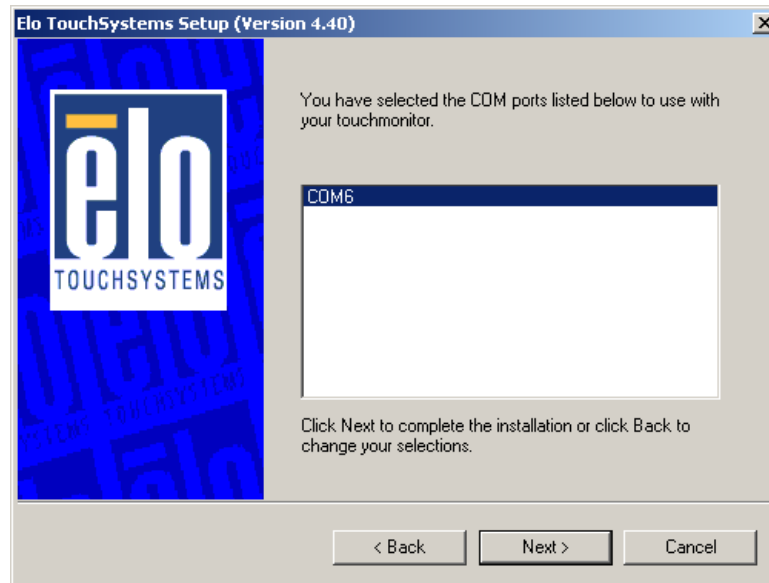
Click on the “Auto-detect Elo devices” check box, then click on the “Next” button.



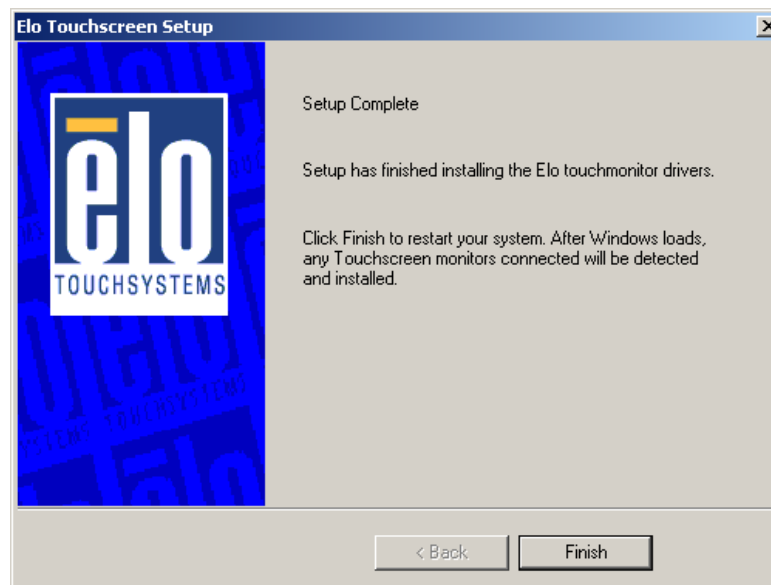
The touch panel connected to the ST-A10 is detected, and “COM6” is chosen. If “COM6” is not chosen, there may be a problem. Click on the “Next” button.



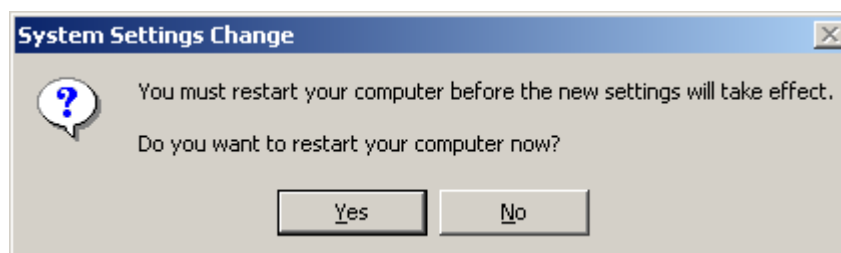
Confirm that “COM6” is chosen, then click on the “Next” button.



When the installation is completed successfully, the following screen appears. Click on the “Finish” button.



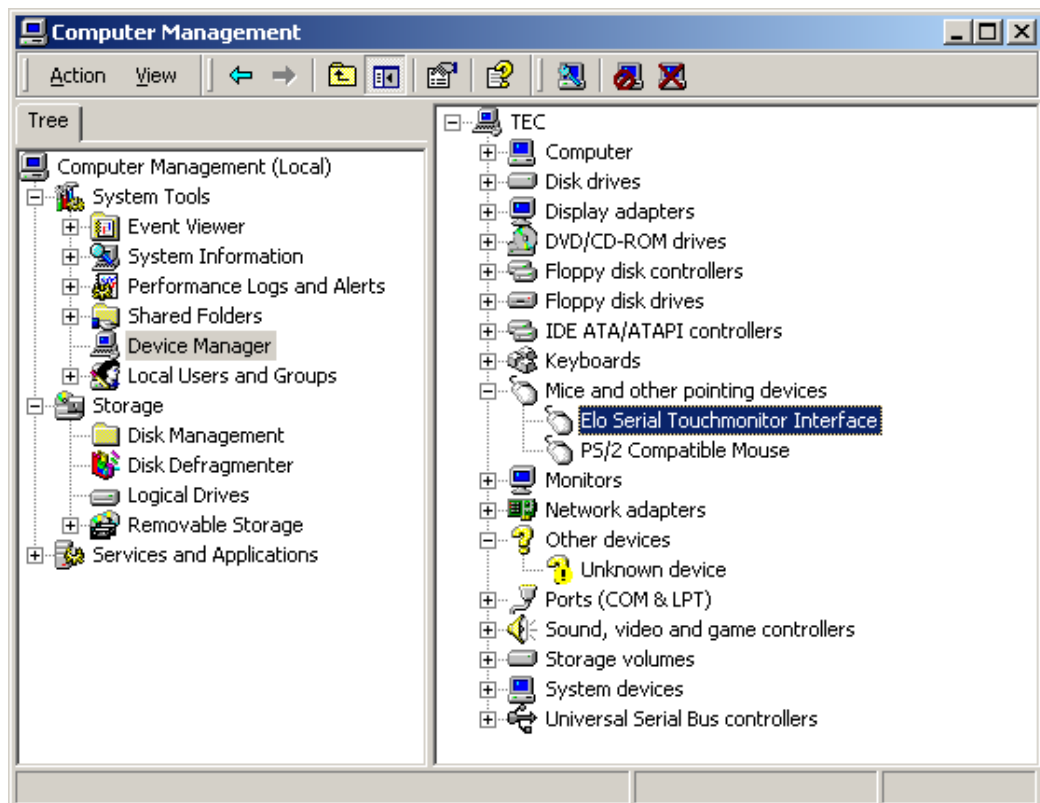
Click on the “Yes” button to reboot your computer.



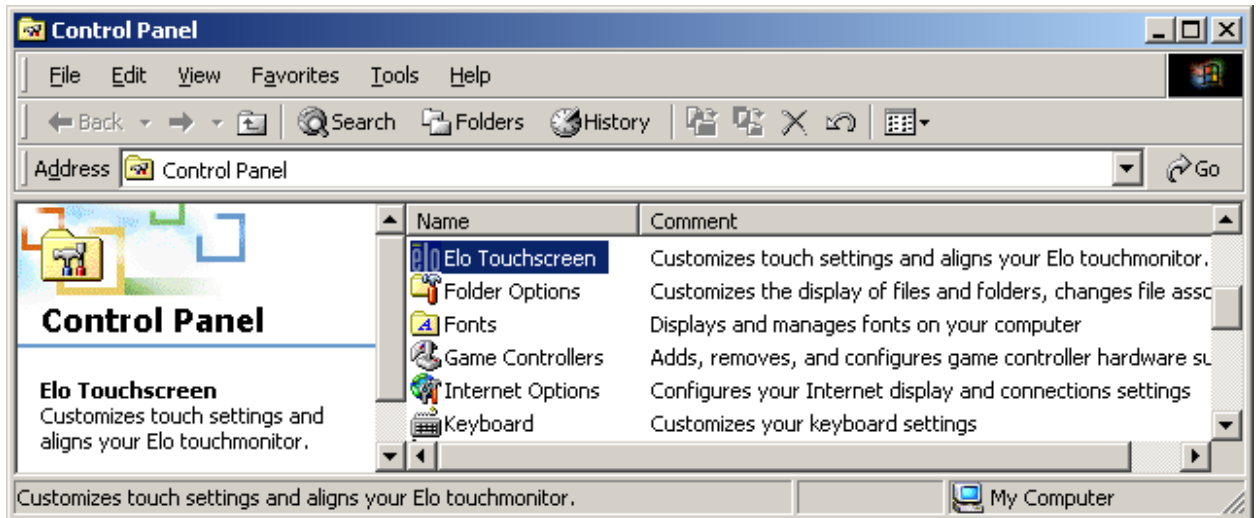
When the reboot screen appears again, click on the “Yes” button to reboot your computer.



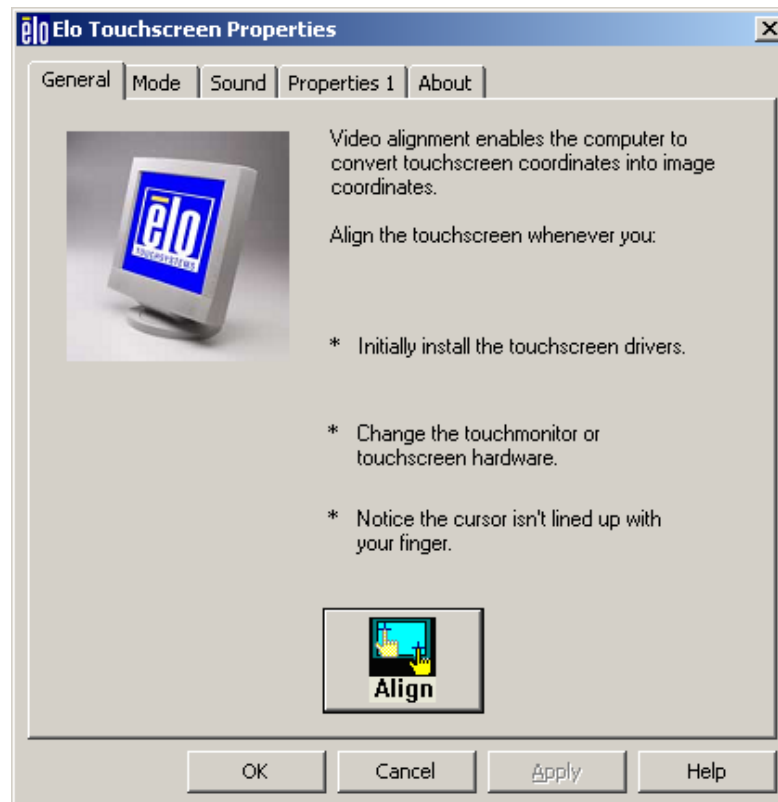
Open Device Manager to confirm the touch panel driver has been installed. Make sure that “Elo Serial Touchmonitor Interface” is registered under the “Mice and other pointing devices” icon.





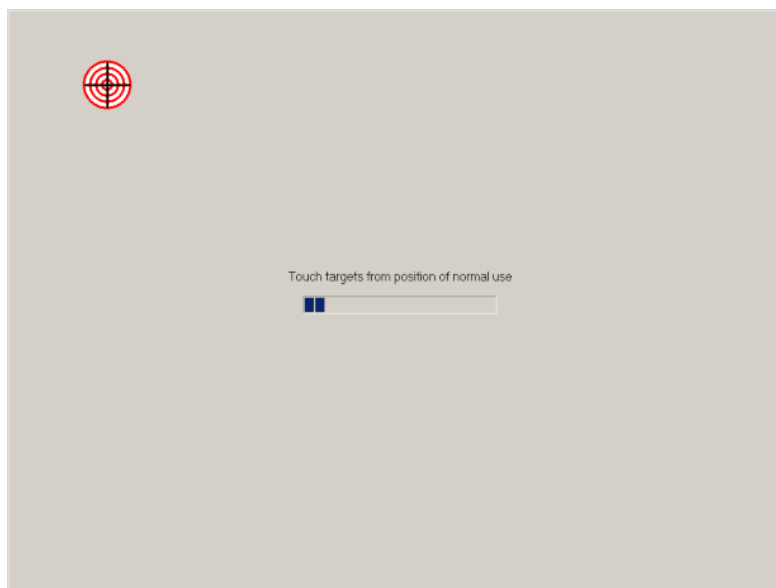
Next, perform calibration settings for the touch panel.
Open Control Panel, and double-click on the “Elo Touchscreen” icon.



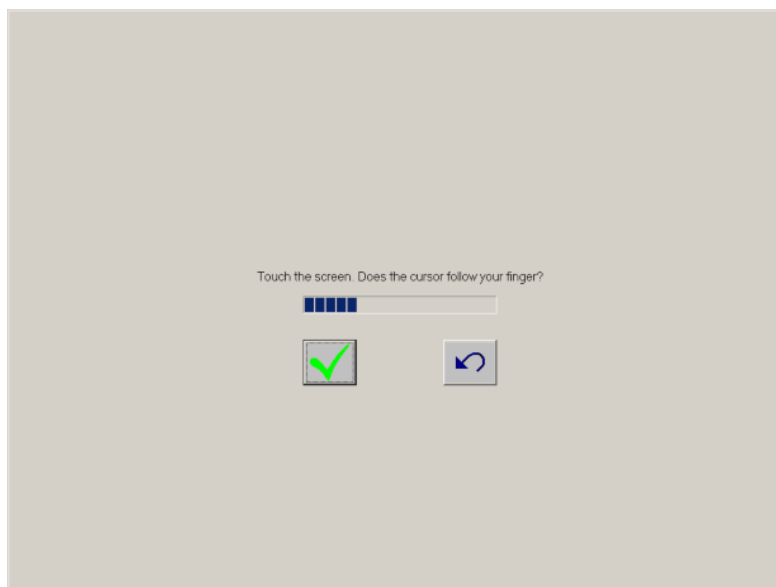
When the “Elo Touchscreen Properties” screen appears, click on the “General” tab, then click on the “Align” button.



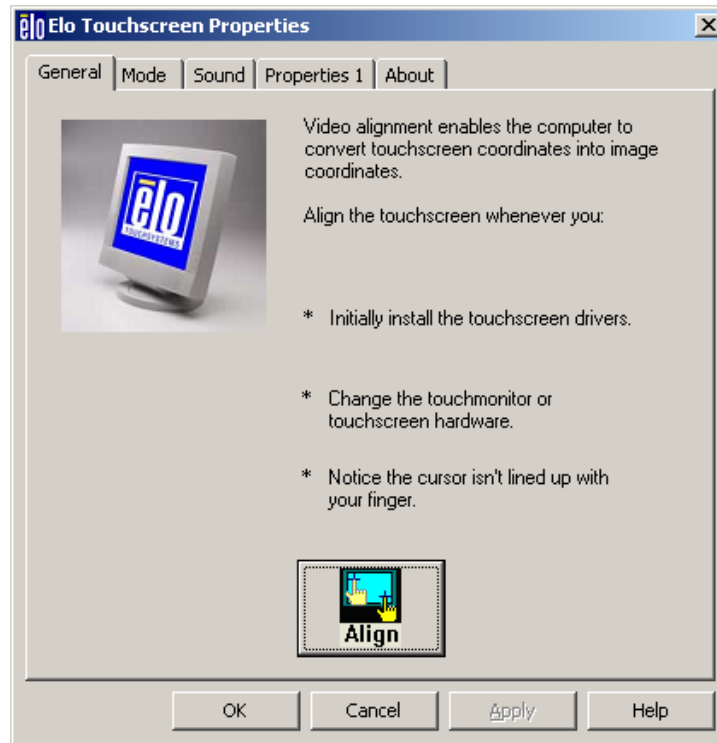
The following calibration screen appears. Perform a calibration by touching the  mark whenever it appears. (The  mark appears three times.)



After the mark was touched three times, two buttons appear at the center of the screen. Click on the check mark button to complete the calibration.

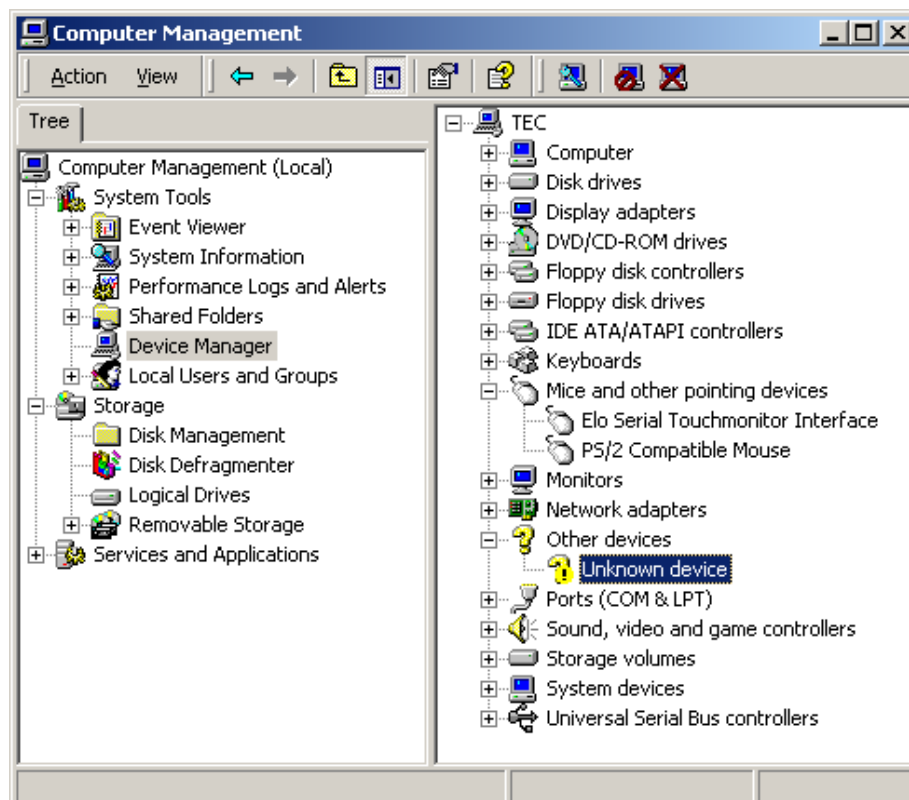


Click on the “OK” button.



3.8 Installation of the iButton Driver

When the iButton is connected to the ST-A10, “USB Device” is shown with an exclamation mark (!) under the “Other devices” icon in the Device Manager screen.



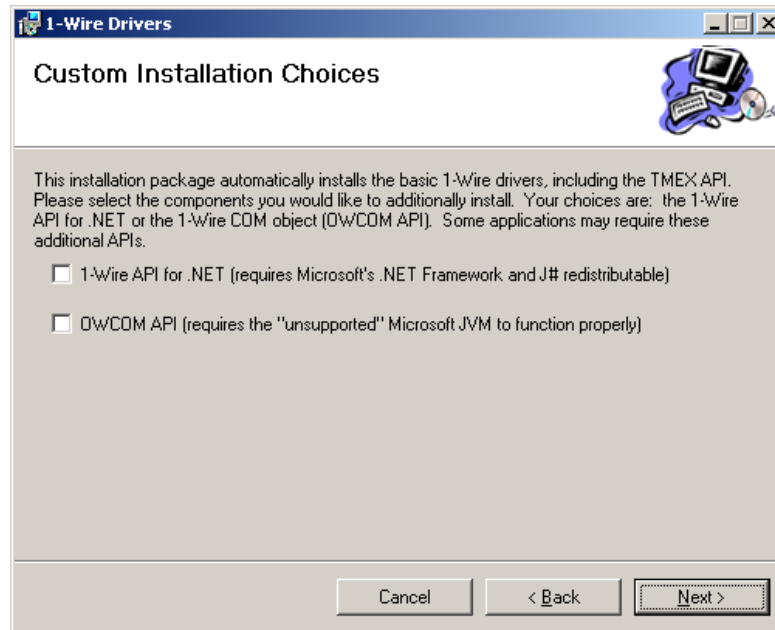
Run "Setup.Exe" in the "ST-A10\iButton\iButton_driver" folder in the Driver Kit CD-ROM, and the following screen appears. Click on the "Next" button.



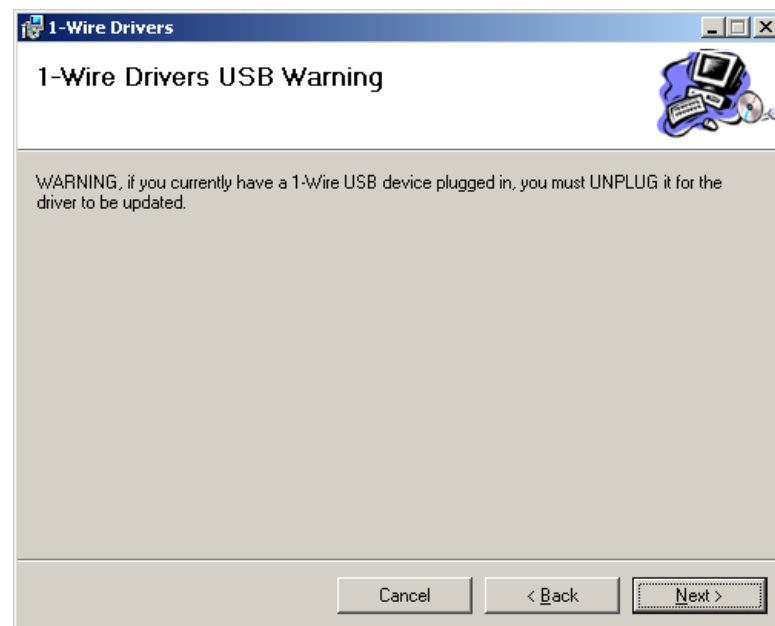
When the "License Agreement" screen appears, click on the "I Agree" radio button, then click on the "Next" button.



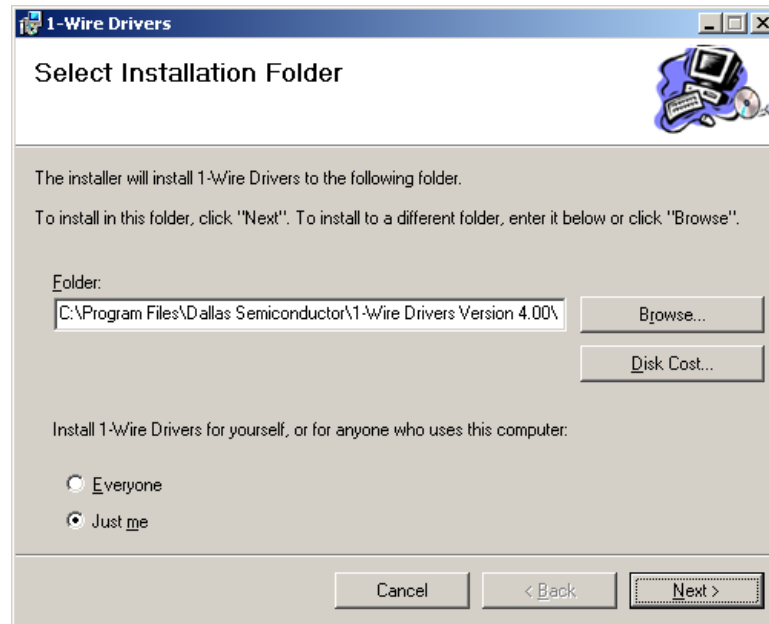
When the Keylock OPOS Control is used, both of “1-Wire API for .NET” and “OWCOM API” are not required. Choose one of the APIs to be required, and click on the “Next” button.



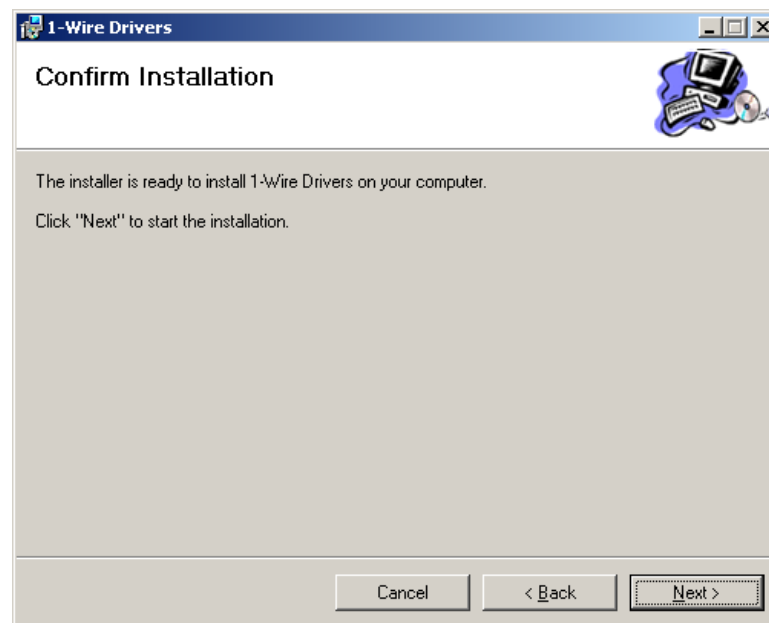
Although the following warning message appears, click on the “Next” button.



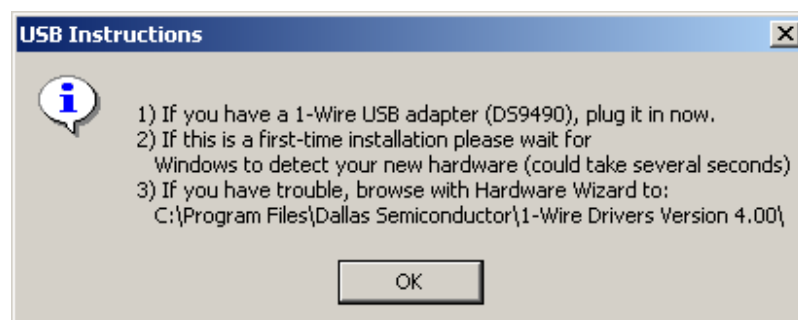
Configure the necessary settings, then click on the “Next” button.



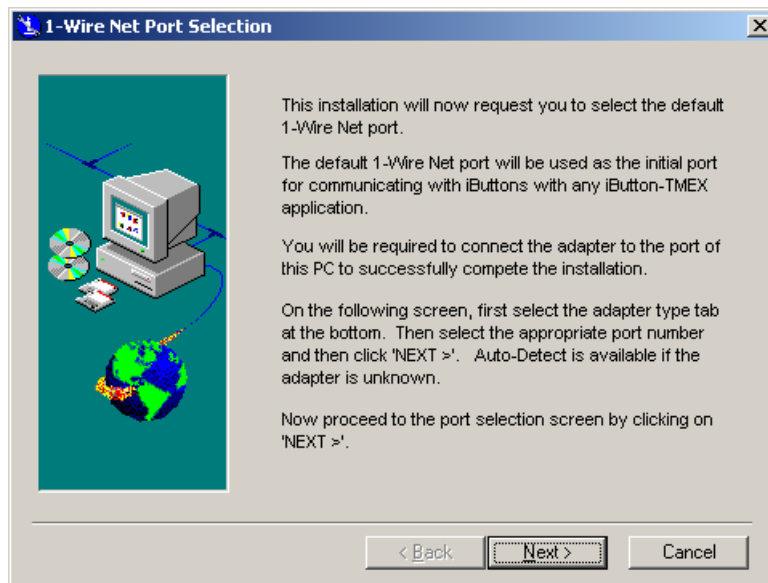
Click on the “Next” button.



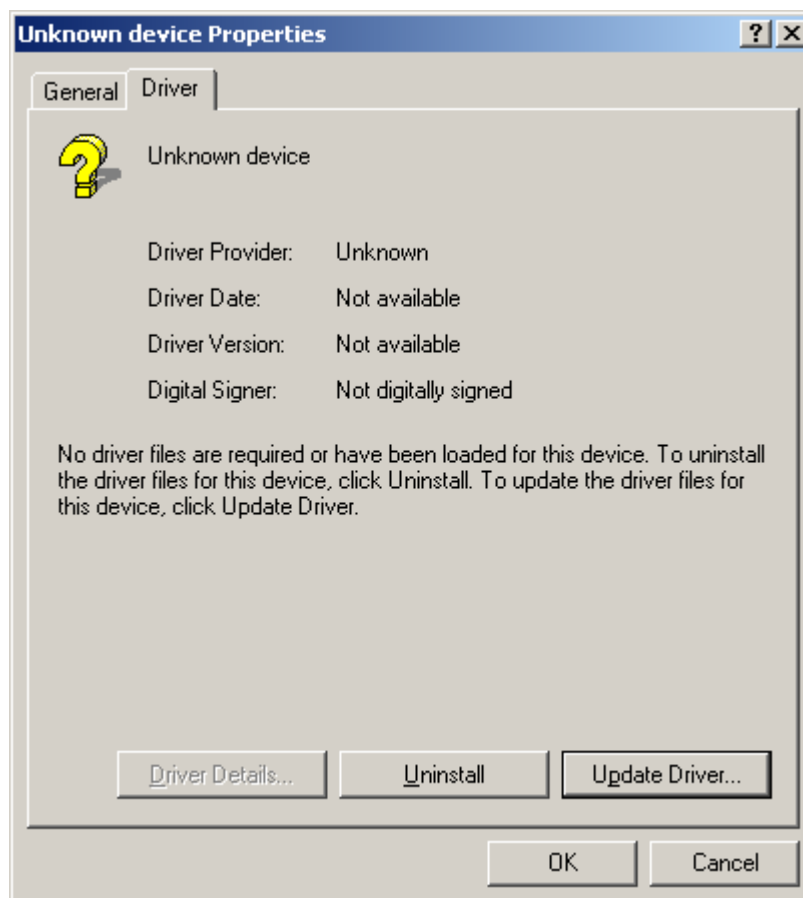
Click on the “OK” button.



When the “1-Wire Net Port Selection” screen appears, do not click on the “Next” button. Just leave it alone. (You will click on the “Next” button later.)



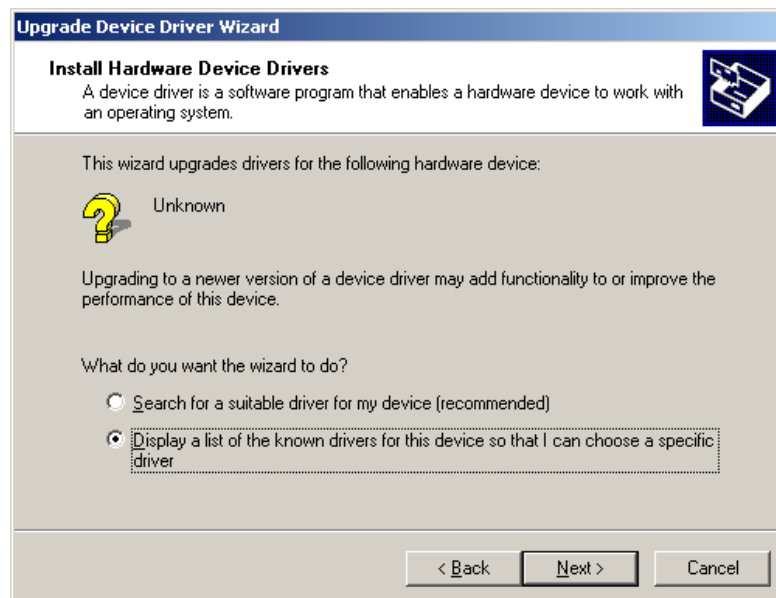
Open Device Manager, right-click on the “Unknown device” icon, then click on “Properties” to open the “Unknown device Properties” screen. Click on the “Driver” tab and click on the “Update Driver...” button.



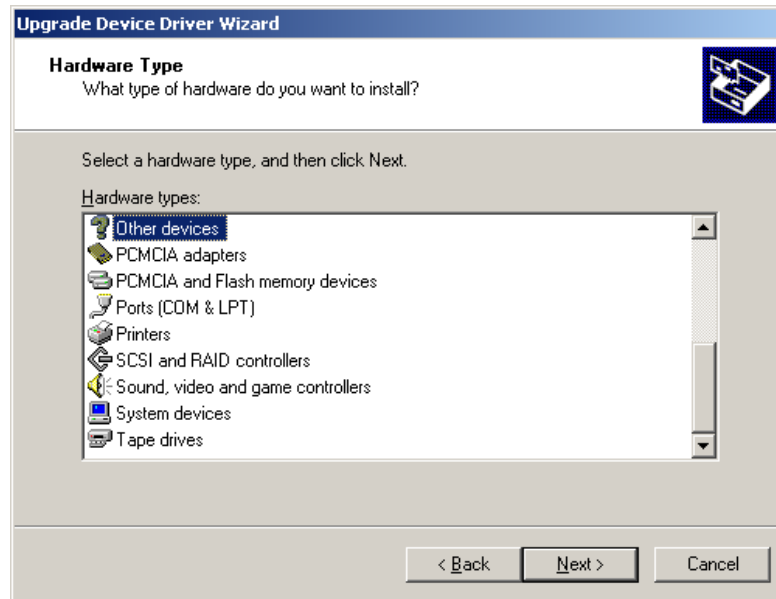
Click on the “Next” button.



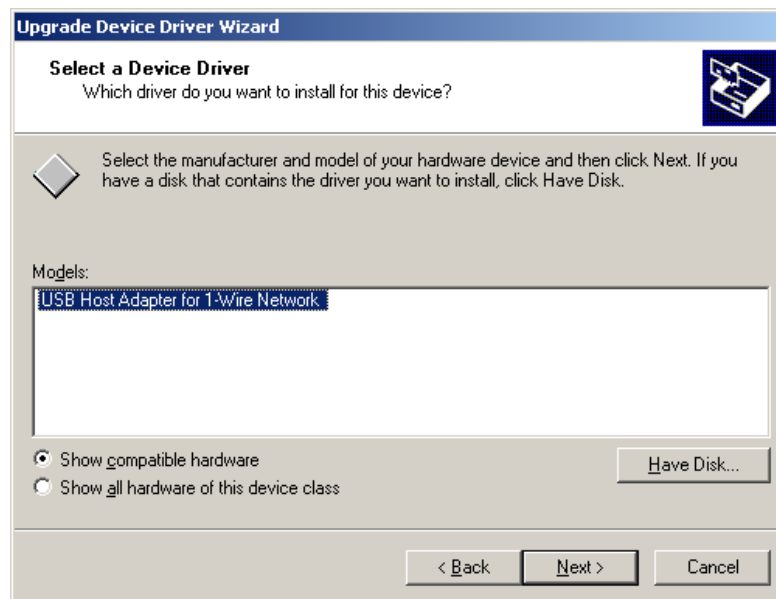
Check the “Display a list of the known drivers for this device so that I can choose a specific driver” radio button, then click on the “Next” button.



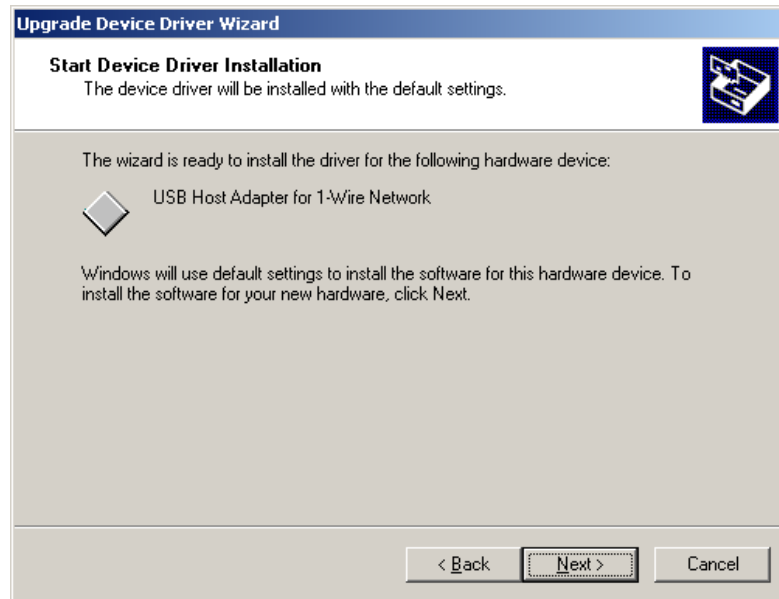
Click on “Other devices”, then click on the “Next” button.



Click on “USB Host Adapter for 1-Wire Network”, then click on the “Next” button.



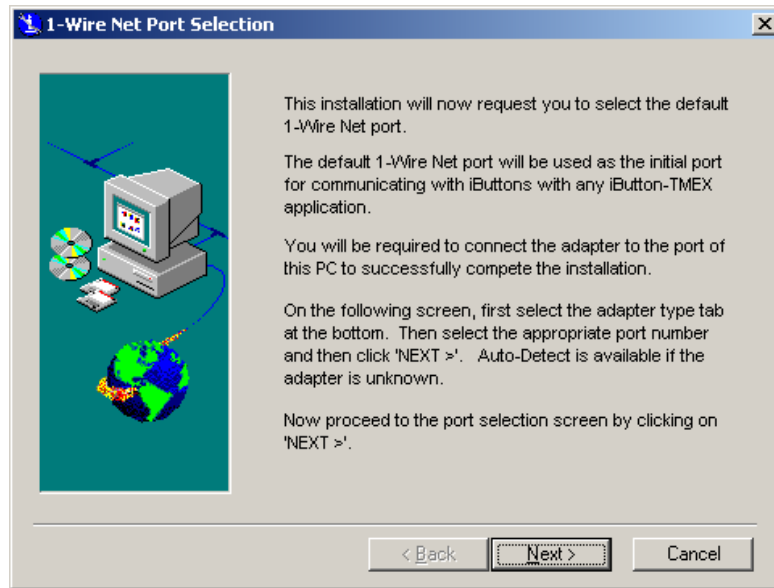
Click on the “Next” button.



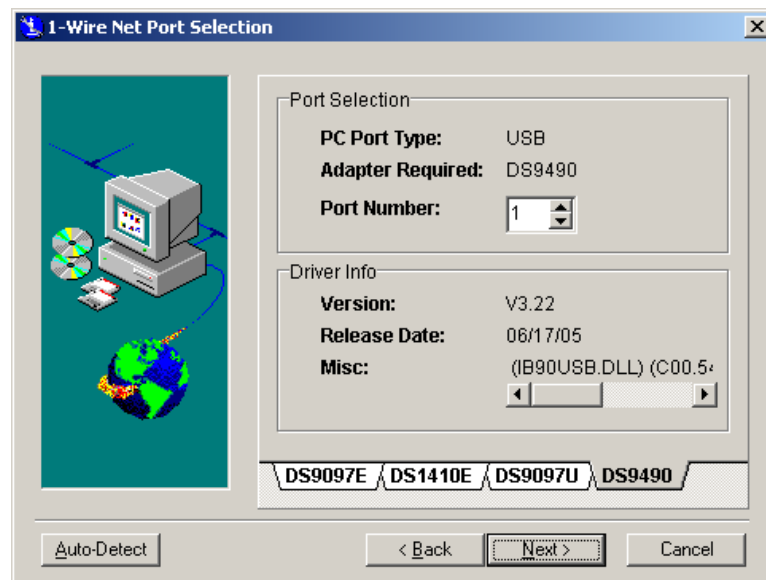
When the following screen appears, click on the “Finish” button to complete the update process.



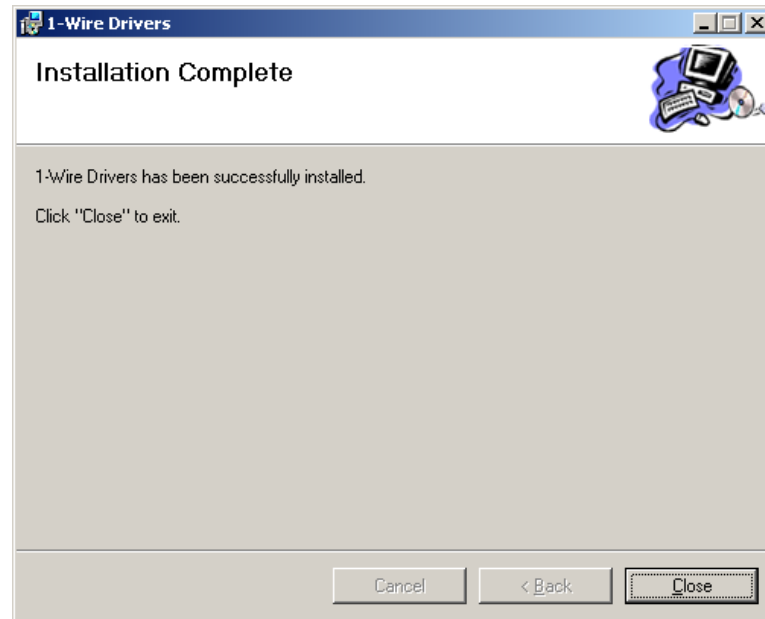
Back to the “1-Wire Net Port Selection” screen, and click on the “Next” button.



Click on the “Next” button.



When the following screen appears, click on the “Close” button to complete the installation.



Open Device Manager to confirm the iButton has been installed.

Make sure that “USB Host Adapter for 1-Wire Network” is registered under the “1-Wire Devices” icon.

