

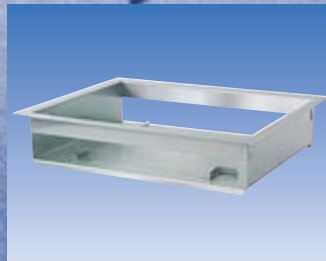
Vega

CAT 17/VE

electronic scales



Free-standing version
in the butcher's



Basket facilitating the scales
mounting



Scales built-in in a counter-top
of a cash register stand

Universal and reliable solution for the demanding

The Vega scales is provided to operate in trade objects of any sizes. It is available in two versions. It can be used as a free-standing control scales or support work of a shop-assistant when built-in in a cash register stand. Scales can be widely applied in trade centres of any size, in industry, gastronomy and processing industry.

UTILITY FEATURES

Device characteristics

The Vega is a modern electronic scales, made in whole of stainless steel. The scales design allows building in the scale into the counter-top; due to this fact the scale can constitute element of fully functional and - at the same time - cheap cash register stand (or a box). This solution can be used even on a single sale stand in small trade centre.

The Vega scales is available in two versions. As a free-standing device equipped with standard, small platter which covers the scales.

As a built-in version on a sale stand, the scale is available together with mounting basket and big platter. This solution provides aesthetic finish, and design and mounting method provide the personnel with a work according to ergonomics requirements and does not restrict the area for shop assistant's legs.

Scales is equipped with a display on a rotary column of adjustable height. It is made of stainless steel and resistant to different factors which can be found under burdensome working conditions: moisture, dustiness, dirt and corrosion. The housing design prevents the prongs and sockets against flooding. The device has its own power supply device.

Appropriation

The Vega scales can be widely applied in trade centres. As a free-standing version, it serves as scales to control weight both in the back of a shop and on specialist single-category departments (fruits, vegetables, meats and sausages, cheeses, etc.). Version built-in in the counter-top is the equipment of cash register stand equipped with any manual or vertical reader. It can support confectioning different products in shops, wholesale centres and warehouses. It can be applied in offices, post offices, banks. It can be used in production and processing plants as well as in gastronomy.

Cooperation with peripheral devices

The Vega scales can cooperate with different type of cash registers (cash register made by ELZAB are recommended), POS terminals and other peripheral devices. Automatic transmission of weighing result eliminates mistakes of manual entering as well as significantly accelerates customer service. Weighing result can be transferred by pressing the key on scales' display, on cash register, POS terminal or automatically - after platter of the scales has been stabilized or on continuous basis.

Quality and supplies continuity warranty

The Saturn belongs to the family of CAT17 scales, known by especially careful execution. All CAT17 scales meet metrology regulations within the scope of using the scales to direct accounting the business sales, they have approval certificate of EC type and they subject to legalisation according to EU regulations before they are approved for sale. Production process is accomplished under supervision of ISO 9001 quality system procedures.

Features and benefits

- made of stainless steel approved to operate in direct contact with food
- measuring system stable and resistant to overloads
- cooperation with cash registers, POS terminals and peripheral devices
- display on a rotary column with adjustable height and readable characters
- tarring within the whole range of weighing
- convenient and fast service
- ease to keep it clean
- opportunity to check at the sale spot the weight of products weighed on self-service stands.

TECHNICAL DATA

Model:	CAT 17/VE	Keyboard:	3 micro-switches: tare, reset, transmission
Type:	Electronic scales, single-range	Communication interfaces:	RS232C (with adjustable transmission parameters)
Accuracy class:	III	Functions:	<ul style="list-style-type: none"> • Products weighing • Weighing and subtracting the tare • Freezing the tare (constant tare) • Cooperation with cash register, POS terminal or peripheral printer
Weighing range/ maximum load:	15 kg (versions available upon request: 3/6/30 kg)	Accessories:	00595 Assembly basket (Dimensions without a flange: 348 x 265 x 81 mm) 67350 Power supply cable to be connected to car lighter socket 67351 Power supply cable to be connected to car battery
Legalisation graduation:	5 g (adequately: 1/2/10 g)	Product code:	CAT 17/VE/15/253x333 (with big platter, to be built-in) CAT 17/VE/15/244,5x306 (with small platter, free-standing)
Upper limit of subtracting tare:	-15 kg (adequately: -3/-6/-30 kg)	Options:	with big platter: 65177 • CAT 17/VE/3/253 x 333 65178 • CAT 17/VE/6/253 x 333 65180 • CAT 17/VE/30/253 x 333 with small platter: 65194 • CAT 17/VE/3/244 x 306 65193 • CAT 17/VE/6/244 x 306 65192 • CAT 17/VE/30/244 x 306
Operation temperature range:	-10°C ÷ +40°C		
Display:	high-contrast LED on a rotary column of adjustable height 130-380 mm		
Digits height:	14 mm		
Power supply:	External power supply IN: 230V~/50Hz/0,1A/23VA OUT: 12V-1A		
Scales weight:	5.2 kg (platform, display column, power supply device)		
External dimensions of a platform: (h x d x w)			
With small platter:	70 x 244,5 x 306 mm		
With big platter:	70 x 253 x 333 mm		
External dimensions of a platter: (d x w)			
Small platter:	244,5 x 306 mm		
Big platter:	253 x 333 mm		