

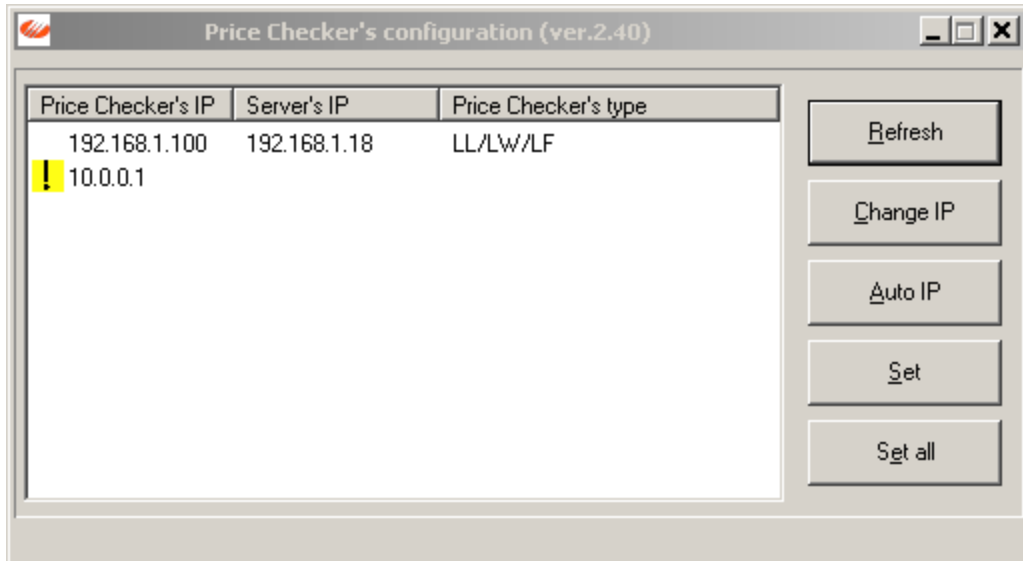
LLH/LWH/LFH/LFGH Price Checker's configuration

To preconfigure Price Checker you should use

- PC_IP.Exe program for Windows 95/98/ME/NT 4.0/2000/XP/Vista operating systems,
 - rc-pcrset program for Linux operating system.
- Price Checker's configuration is single operation which is realised through LAN..

Below you find description of PC_IP.Exe program.

Before starting PC_IP.Exe program you should stop any Price Checker's server (e.g. PCSERVER.EXE).
After starting you see window with available Price Checkers, e.g.:



Steps of configuration:

1) setting unique IP number,

Price Checker's IP must be proper and unique in given local network. In other case setting other parameters is impossible. Near Price Checker's data without proper IP you see exclamation mark on yellow background.

Button „**CHANGE IP**” let you change IP of single, chosen from the list Price Checker.

Button „**AUTO IP**” let you set IP numbers for all Price Checkers. Numeration is continuous and begins from IP number set by user.

We strongly recommend setting IP address from local address-space such as 192.168.XX.YY or 10.0.XX.YY or from class A, B or C. Setting IP-address from class D or E or IP address equal to null causes no communication with Price Checker.

2) setting in Price Checker:

- server IP address (IP address of PC-computer which will handle Price Checkers),
- local subnet mask,
- router IP address (if PC-computer which is Price Checker's server is situated in another network then Price Checker). If Price Checker's server and Price Checkers work in the same local network router IP address should be the same as server IP address,

Additionally LFGH Price Checker you can set in two modes:

- 3 lines/free mode; it is recommended mode, but it must be handled by “server” program,
- 2 lines mode; it is mode compatible with LLH/LWH/LFH Price Checker; it allows to work with “server” program which do not handle new functionality of LFGH Price Checker

Button „**SET**” let you set settings described above for single Price Checker.

Button „**SET ALL**” let you set settings described above for all Price Checkers in local network.

Button „**REFRESH**” let you display list of available Price Checkers again.